

Custom Order Design Catalog



**2026
CONTRACT
COLLECTION**



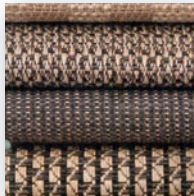
Table of Contents



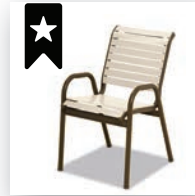
SLING FEATURES & BENEFITS 2-4



SLING COLLECTIONS 5-16



SLING & PADDED SLING FABRIC SELECTION 17-21



STRAP FEATURES & BENEFITS 23



STRAP COLOR SELECTION 23



STRAP COLLECTION 24



POLYMER/ALUMINUM FEATURES & BENEFITS 25-26



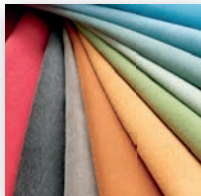
POLYMER/ALUMINUM COLLECTIONS 27-30



CUSHION FEATURES & BENEFITS 31-32



CUSHION COLLECTIONS 33-38



CUSHION FABRIC SELECTION 39-40



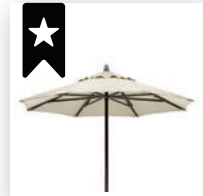
PATIO HEATER 41-42



FIRE TABLES 43-45



TRASH/TOWEL RECEPTACLE 46



UMBRELLA FEATURES & BENEFITS 47



UMBRELLAS & BASES 48-50



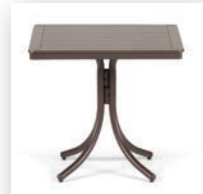
FURNITURE ACCESSORIES 50



OBSOLETE ACRYLIC ACRYLIC TABLE 51



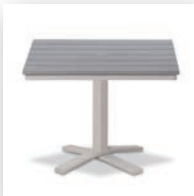
VALUE HAMMERED MGP TOP TABLES 51-52



MGP TOP SLAT TABLES 52-54



MGP DASH TOP TABLES 55-56



RUSTIC POLYMER TOP TABLES 57-59



ORIGINS TOP TABLES 60



MAINTENANCE, WARRANTY & SERVICE 63-64

HIGH PERFORMANCE 2604 POWDERCOAT FINISHES

WHAT IS AAMA 2604?



- OUR SUPER DURABLE POWDERCOAT FINISHES MEET AND EXCEED THE STRICT PERFORMANCE REQUIREMENTS OF THE AAMA 2604 SPECIFICATION.
- THE CRITERIA & RIGOROUS TESTING REQUIREMENTS ARE ESTABLISHED BY THE FGIA (FENESTRATION & GLASS INDUSTRY ALLIANCE), FORMERLY KNOWN AS THE AMERICAN ARCHITECTURAL MANUFACTURERS ASSOCIATION (AAMA).
- AT LEAST 5X THE WEATHERING PERFORMANCE OF A STANDARD POLYESTER POWDERCOAT.
- OUR POWDERCOAT FINISHES WERE REQUIRED TO PASS OVER 20 AAMA 2604 CERTIFICATION TESTS, BELOW IS A LIST OF KEY AAMA STANDARDS AND TESTS:

HUMIDITY RESISTANCE
SALT SPRAY RESISTANCE
FLORIDA EXPOSURE
COLOR RETENTION

3000 HOURS
3000 HOURS
5 YEARS
DELTA E <5

POLYMER YOU CAN CLEAN!

OUR MGP IS CLEANABLE UNLIKE THE OTHERS!

OUR RESIN

SOLID RESIN 0% POROSITY

- CLEANABLE
- NONPOROUS SOLID RESIN
- CONSISTENT SURFACE FINISH
- WILL NOT ABSORB WATER
- RESISTANT TO MOST CHEMICALS
- WILL NOT CRACK, SEPARATE OR FADE IN ANY OUTDOOR ENVIRONMENT
- PRESENTS NO FIRE HAZARD
- MADE FROM ONLY FDA APPROVED RESINS



THEIR RESIN

COMPETITORS FOAMED RESIN



- POROUS FOAMED RESIN
- TRAPS OIL AND DIRT PARTICLES
- FOAMING ADDS AREAS WHERE MILDEW AND DIRT CAN PENETRATE THE SURFACE
- DIFFICULT TO FULLY CLEAN

FEATURES & BENEFITS SLING

SLING COLLECTIONS ON PP. 4-23

MARINE GRADE POLYMER

Available in 8 MGP frame colors and 82 outdoor quality commercial grade sling fabrics.

MGP will not crack, rot or separate in any outdoor environment.

All Slings are constructed with high performance outdoor quality fibers.

MGP color pigment is all through the material, so a slightly scratched surface is less noticeable.

Stainless steel hardware.

Slings are easy to replace.

No dangerous pinch points.

MGP is made from only FDA approved resins.

MGP is comfortable to the touch on hot and cold days.

Contains over 30% recycled resin.

Strong, durable construction.

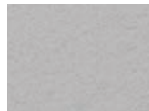
MGP has zero porosity, meaning it is easy to clean.



STANDARD MGP FRAME FINISH SELECTION



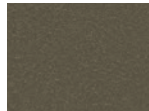
P50 Snow



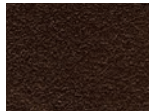
PY0 Warm Grey



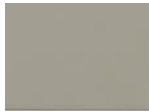
P60 Desert



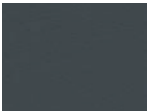
P40 Beachwood



P10 Kona



PF0 Storm



P30 Classic Graphite



P70 Black

SLING PRODUCTS BY STYLE * notates item is chat height or lower

DINING ARM CHAIRS



CHAT HEIGHT ARM CHAIRS



CAFE/BISTRO CHAIRS



PORCH ROCKERS



OTTOMANS



POWDERCOATED ALUMINUM



TEXTURED POWDERCOAT FRAME COLOR OPTIONS



TWO & THREE SEATERS



BALCONY & BAR CHAIRS



CHAISES



Leeward MGP Sling

Marine Grade Polymer (MGP) / Aluminum Frame • Stainless Hardware • Available in Sling • Available in Acrylic & Mesh Padded Sling
• Available in Sunbrella® Rain & Sunbrella® Stock Book Program



THE RISE AT NORTHGATE
COLLEGE STATION, TX



5YR

9410
Arm Chair
29"Wx38.5"Hx28.5"D
Item Weight: 24lbs



5YR

9500
Stacking Café Chair
28.5"Wx34"Hx26"D
Item Weight: 17lbs



5YR

9L10
Stacking Armless Side
Chair
21.5"Wx33.75"Hx23.5"D
Item Weight: 16lbs



5YR

9530
Supreme Arm Chair
29"Wx44.25"Hx28.5"D
Item Weight: 26lbs



5YR

9550
Supreme Rocker
29"Wx44"Hx31"D
Item Weight: 29lbs



5YR

9580
Balcony Height Swivel
Arm Chair
28"Wx45"Hx26.5"D
Item Weight: 27lbs



5YR

9590
Bar Height Swivel
Arm Chair
28"Wx49"Hx26.5"D
Item Weight: 29lbs



5YR

9400
Stacking Armless Lay
Flat Chaise w/ Wheels
28"Wx41.5"Hx66"D
Reclined Length = 78"
Item Weight: 34lbs



5YR

9L20
Stacking Armless Long
Frame Lay Flat Chaise
w/ Wheels
28.5"Wx43.75"Hx72"D
Reclined Length = 78"
Item Weight: 45lbs

Additional Features & Benefits Leeward MGP Sling

- Cafe Chair, Armless Side Chair, Armless Chaise and Armless Long Frame Lay Flat Chaise are all stackable items for easy storage!
- Stacking Armless Long Frame Lay Flat Chaise features an 18" seating height for easy in and out.
- 9400 & 9L20 Chaises feature integrated wheels in back legs.
- Coordinating cushion collection featured on p. 33.
- Add-on items: PCMS Universal Chaise Pad and HDPL Attachable Pillow available, see p. 50 for details.



Dune MGP Sling

Marine Grade Polymer (MGP) / Aluminum Frame • Stainless Hardware • Available in Sling • Available in Acrylic & Mesh Padded Sling
• Available in Sunbrella® Rain & Sunbrella® Stock Book Program



5YR

9L10
Stacking Armless Side Chair
21.5"Wx33.75"Hx23.5"D
Item Weight: 16 lbs



5YR

9500
Stacking Cafe Chair
28.5"Wx34"Hx26"D
Item Weight: 17 lbs

NEW
2024



5YR

9NN0
Stacking Armless Chaise
w/ Wheels
25.5"Wx43.5"Hx69"D
Reclined Length = 78"
Item Weight: 38lbs



5YR

9N80
Stacking Hydro-Lounge™ Chaise
25.5"Wx39.75"Hx53"D
Item Weight: 35lbs

Additional Features & Benefits DUNE MGP Sling

- All Dune items are stackable for easy storage!
- **9NN0 Stacking Armless Chaise** features a 16.5" seating height for easy in and out. This design features a unique integrated ratchet which minimizes pinch points.
- **9N80 Stacking Hydro-Lounge™ Chaise** has a 16" seat height, perfect for usage on a pool ledge. The MGP frame is designed for both water and land use. The contour of this chaise is perfect for lounging in the pool.
- **9NN0 Stacking Armless Chaise** features integrated wheels.
- Add-on items: **PCMS Universal Chaise Pad** and **HDPL Attachable Pillow** available, see p. 50 for details.



5YR = 5 Year Contract Warranty

3YR = 3 Year Contract Warranty

Wexler Sling

Marine Grade Polymer (MGP) Frame • Choice of MGP or Rustic Polymer Arms • Stainless Hardware • Available in Sling • Available in Acrylic & Mesh Padded Sling • Available in Sunbrella® Rain & Sunbrella® Stock Book Program



MAKE-A-WISH
TRUMBULL, CT



6W70
Chat Height Arm Chair
w/ MGP Arms
29.25"Wx33"Hx28"D
Item Weight: 26 lbs



X070
Chat Height Arm Chair
w/ Rustic Polymer Arms
29.25"Wx33"Hx28"D
Item Weight: 26 lbs



6W30
Chat Supreme Rocker
w/ MGP Arms
29.75"Wx40.5"Hx32.75"D
Item Weight: 30 lbs



X030
Chat Supreme Rocker
w/ Rustic Polymer Arms
29.75"Wx40.5"Hx32.75"D
Item Weight: 30 lbs



6W40
Chat Height Two-Seat Loveseat
w/ MGP Arms
50.75"Wx33"Hx28"D
Item Weight: 35 lbs



X040
Chat Height Two-Seat Loveseat
w/ Rustic Polymer Arms
50.75"Wx33"Hx28"D
Item Weight: 35 lbs



6W50
Chat Height Three-Seat
Sofa w/ MGP Arms
72.25"Wx33"Hx30"D
Item Weight: 45 lbs



X050
Chat Height Three-Seat Sofa
w/ Rustic Polymer Arms
72.25"Wx33"Hx30"D
Item Weight: 45 lbs



5W80
End Table
23"Wx19.75"Hx23"D
Item Weight: 12 lbs
Table Top Available in MGP
& Rustic Polymer



5W90
Coffee Table
42"Wx19.75"Hx24"D
Item Weight: 21 lbs
Table Top Available in MGP
& Rustic Polymer

Additional Features & Benefits Wexler Sling

- Full MGP Frame construction with stainless steel hardware allows this collection to withstand any elements.
- Available with Rustic Polymer Arms.
- Chat Height design makes for casual dining and ultra comfort.
- Collection features its own mid-century modern style end and coffee tables.
- **6W30/X030 Chat Supreme Rocker** features a higher back designed at the perfect height for resting your head.
- Coordinating cushion collection featured on p. 36.

St. Catherine Sling

Marine Grade Polymer (MGP) Frame • Choice of MGP or Rustic Polymer Arms • Stainless Hardware • Available in Sling • Available in Acrylic & Mesh Padded Sling • Available in Sunbrella® Rain & Sunbrella® Stock Book Program



**SOAKY MOUNTAIN WATERPARK
SEVIERVILLE, TN**



HH70
Arm Chair w/ MGP Arm
26"Wx38"Hx29.75"D
Item Weight: 16lbs

5YR



H070
Arm Chair w/ Rustic
Polymer Arm
26"Wx38"Hx29.75"D
Item Weight: 16lbs

5YR



HH30
Supreme Arm Chair
w/ MGP Arm
26"Wx43.5"Hx29"D
Item Weight: 16lbs

5YR



H030
Supreme Arm Chair w/
Rustic Polymer Arm
26"Wx43.5"Hx29"D
Item Weight: 16lbs

5YR



HH20
Four-Position Lay Flat Chaise w/ MGP Arm
29"Wx43"Hx63.5"D
Reclined Length = 78.5"
Item Weight: 23lbs

5YR



H020
Four-Position Lay Flat Chaise
w/ Rustic Polymer Arm
29"Wx43"Hx63.5"D
Reclined Length = 78.5"
Item Weight: 23lbs

5YR

Additional Features & Benefits St. Catherine MGP Sling

- Arm Chair, Supreme Arm Chair and Four-Position Lay Flat Chaise are all designed with perfectly curved arms for maximum comfort.
- Four Position Lay Flat Chaise is constructed at a 16" seating height for easy in and out and is 78.5" when laid flat.
- Available with Rustic Polymer Arms.
- Coordinating cushion collection featured on p. 34.
- Add-on items: PCMS Universal Chaise Pad and HDPL Attachable Pillow available, see p. 50 for details.



5YR = 5 Year Contract Warranty

3YR = 3 Year Contract Warranty

Bazza Sling

Powder Coat Aluminum Frame • Choice of Marine Grade Polymer (MGP) or Rustic Polymer Arm Accents • Stainless Hardware • Available in Sling
• Available in Acrylic & Mesh Padded Sling • Available in Sunbrella® Rain & Sunbrella® Stock Book Program



KIVA DUNES GOLF CLUB
GULF SHORES, AL



5YR

Z010
Stacking Café Chair
w/ Polymer Arms
26.5"Wx35.5"Hx25"D
Item Weight: 10lbs



5YR

9K50
Stacking Armless Café Chair
21.5"Wx35.5"Hx25.75"D
Item Weight: 11lbs



5YR

Z050
Bistro Stacking Chair
w/ Polymer Arms
21"Wx34"Hx26"D
Item Weight: 9lbs



5YR

Z080
Stacking Balcony Height Café
Chair w/ Polymer Arms
26.5"Wx43.5"Hx26.5"D
Item Weight: 14.5lbs



5YR

Z090
Stacking Bar Height Café Chair
w/ Polymer Arms
26.5"Wx47.5"Hx26.5"D
Item Weight: 17lbs



5YR

Z0S0
Contour Armless Chaise w/
Polymer Overlay
30"Wx42.75"Hx86"D
Reclined Length = 86"
Item Weight: 43lbs



5YR

Z0C0
Add-on Chaise Connector Kit
(set of 2)
*Sample shown below



5YR

Z0T0
Add-on 26.5" x 10.25"
Chaise Table Connector
Kit
Note: Z0T0 Chaise Table
Connector includes a stem
to secure an umbrella. #13
Base (see p.51) could be
added for additional stability.

Additional Features & Benefits Bazza Sling

- **Bistro Stacking Chair and Stacking Armless Café Chair** are the perfect size to maximize the number of chairs around a table.
- **Contour Armless Chaise** has a 16" seating height for easy in and out. The chaise remains comfortably contoured in the reclined positions. Chaise features integrated hidden wheels for easy movement.
- **Add-on Chaise Connector Kits** easily connect multiple chaises to create a double, triple or quadruple chaise arrangement.
- **Polymer Arms** are available in 8 Standard MGP, 4 Accent MGP and 5 Rustic Polymer Colors.
- **Coordinating Bench Collection** on p. 28.

Belle Isle Sling

Powder Coat Aluminum Frame • Choice of Marine Grade Polymer (MGP) or Rustic Polymer Arm Accents
• Available in Sling • Available in Acrylic & Mesh Padded Sling • Available in Sunbrella® Rain & Sunbrella® Stock Book Program



L070
Arm Chair
27.5"Wx39"Hx28.5"D
Item Weight: 12.5 lbs

5YR



L010
Supreme Arm Chair
27.5"Wx44"Hx28.5"D
Item Weight: 14 lbs

5YR



L040
Arm Chair w/ Multi-Position Back
28.5"Wx39"Hx30"D
Reclined Length: 46.5"
Item Weight: 17 lbs

5YR



L0A0
Balcony Height Swivel Arm Chair
27"Wx43.5"Hx30"D
Item Weight: 23 lbs

5YR



L0B0
Bar Height Swivel Arm Chair
27"Wx47"Hx30"D
Item Weight: 25 lbs

5YR



L090
Three Seat Sofa
71"Wx38.75"Hx29"D
Item Weight: 35 lbs

5YR



L000
Ottoman
26"Wx16"Hx19"D
Item Weight: 6 lbs

5YR



L020
Four Position Lay Flat Chaise
31"Wx39"Hx65.5"D
Reclined Length = 78.5"
Item Weight: 21 lbs

5YR

Additional Features & Benefits Belle Isle Sling

- All items except for the **Ottoman** feature a curved Polymer arm which adds not only style but is comfortable to the touch in any climate. The Powder-coated Aluminum Frame and the Polymer arms can be color matched or two-toned to suit your needs.
- **Arm Chair with Multi-Position Back** is perfect for both dining and relaxing! Use with the ottoman to make a two piece chaise for tighter spaces.
- **Four Position Lay Flat Chaise** features a seating height of 14" for easy in and out. The chaise has four easy-to-adjust positions and is 78.5" when laid fl at.
- Polymer Arms are available in 8 Standard MGP, 4 Accent MGP and 5 Rustic Polymer Colors.
- Coordinating cushion collection on p. 38.
- Add-on items: **PCMS Universal Chaise Pad** and **HDPL Attachable Pillow** available, see p. 50 for details.



5YR = 5 Year Contract Warranty

3YR = 3 Year Contract Warranty

Kendall Sling

Powder Coat Aluminum Frame • Available in Sling • Available in Acrylic & Mesh Padded Sling
• Available in Sunbrella® Rain & Sunbrella® Stock Book Program



FULTON HOMES
QUEENS CREEK, AZ



9K10

5YR

Stacking Café Chair
25.5"Wx35.5"Hx25"D
Item Weight: 9 lbs



9K50

5YR

Stacking Armless Café Chair
21.5"Wx35.5"Hx25.75"D
Item Weight: 11 lbs



9K40

5YR

Stacking Chat Chair
25"Wx38"Hx31.25"D
Item Weight: 12 lbs



9K80

5YR

Stacking Balcony Height
Café Chair
25.5"Wx43.5"Hx26.5"D
Item Weight: 14 lbs



9K90

5YR

Stacking Bar Height Café Chair
25.5"Wx47.5"Hx26.5"D
Item Weight: 17 lbs



9100

5YR

Stacking Armless Lay Flat Chaise
25.75"Wx41"Hx66.75"D
Reclined Length = 78.25"
Item Weight: 21 lbs



9K30

5YR

Lay-flat Stacking High Bed
Armless 18" Chaise
28"Wx43.75"Hx82"D
Reclined Length = 82"
Item Weight: 25 lbs

Additional Features & Benefits Kendall Sling

- All Kendall items are stackable for easy/convenient storage!
- This contemporary design features an extra-durable aluminum frame with replaceable plastic glides to protect patio surface.
- **Stacking Chat Chair** provides chaise comfort while saving valuable space.
- **Stacking Armless Cafe Chair** is the perfect size to maximize the number of chairs around a table.
- **Stacking Armless Lay Flat Chaise** features a 15" seating height for easy in and out. This chaise features a unique integrated reclining mechanism for a sleek contemporary appeal and to minimize pinch points.
- Add-on items: **PCMS Universal Chaise Pad** and **HDPL Attachable Pillow** available, see p. 50 for details.



Tribeca Sling

Powder Coat Aluminum Frame • Available in Standard Sling only



MIAMI, FL



1T70
Stacking Café Chair
24"Wx34"Hx24.5"D
Item Weight: 11 lbs

5YR



9K30
Lay-flat Stacking High Bed
Armless 18" Chaise
28"Wx43.75"Hx82"D
Reclined Length = 82"
Item Weight: 25 lbs

5YR

Additional Features & Benefits Tribeca Sling

- **Stacking Café Chairs** are densely stackable for easy/convenient storage!
- The unique wrapped sling on the **Stacking Café Chair** provides a more upholstered look than traditional sling.
- Sharp contemporary lines are perfect for today's aesthetic.
- The small scale of this item is at home in any commercial setting.

5YR = 5 Year Contract Warranty

3YR = 3 Year Contract Warranty

Aruba Sling

Powder Coat Aluminum Frame • Available in Sling • Available in Acrylic & Mesh Padded Sling
• Available in Sunbrella® Rain & Sunbrella® Stock Book Program



H2OBX WATERPARK
POWELLS POINT, NC



7A70
Stacking Arm Chair
25"Wx34.75"Hx28.5"D
Item Weight: 8 lbs



7A00
Supreme Stacking
Arm Chair
25"Wx43.5"Hx29.25"D
Item Weight: 10 lbs



7A10
Stacking Café Chair
23.5"Wx33.25"Hx26"D
Item Weight: 7 lbs



7A30
Balcony Height
Stacking Café Chair
23.5"Wx42"Hx29"D
Item Weight: 12 lbs



7A40
Bar Height Stacking
Café Chair
23.5"Wx46"Hx29"D
Item Weight: 14 lbs



7A80
Balcony Height Swivel
Café Chair
23.5"Wx41.5"Hx26"D
Item Weight: 15 lbs



7A90
Bar Height Swivel Café
Chair
23.5"Wx45.25"Hx26"D
Item Weight: 16 lbs



5A10
Dining Height
Armless Café Chair
17.5"Wx35.5"Hx25"D
Item Weight: 7 lbs



5A30
Balcony Height Armless
Café Chair
17.5"Wx43.5"Hx25.75"D
Item Weight: 8 lbs



5A40
Bar Height Armless Café
Chair
17.5"Wx47"Hx26.5"D
Item Weight: 9 lbs



5A20
Four-Position Lay Flat
Stacking Armless Chaise
28"Wx42.5"Hx66"D
Reclined Length = 78.25"
Item Weight: 18 lbs



5790
Four-Position High Bed Lay
Flat Stacking Arm Chaise
27.75"Wx48"Hx65"D
Reclined Length = 77.5"
Item Weight: 18.5 lbs

Additional Features & Benefits Aruba Sling

- Many items stack for convenient storage.
- This collection celebrates 21 years of longevity, quality & value.
- The broad depth of this collection allows for a variety of seating applications that will coordinate beautifully.
- Four Position High Bed Lay Flat Arm Chaise features a seating height of 18" for easy in and out.
- Add-on items: PCMS Universal Chaise Pad and HDPL Attachable Pillow available, see p. 50 for details.



Gardenella Sling

Powder Coat Aluminum Frame • Available in Sling • Available in Acrylic & Mesh Padded Sling
• Available in Sunbrella® Rain & Sunbrella® Stock Book Program

**COLLECTION
FEATURED
on
FRONT & BACK
COVERS!**



**THE RESORT AT MASSEY'S LANDING
MILLSBORO, DE**



7670
Stacking Arm Chair
24"Wx34"Hx28.5"D
Item Weight: 7 lbs

3YR



8L70
Stacking Café Chair
22.5"Wx33"Hx25"D
Item Weight: 8 lbs

5YR



8L60
Stacking Bistro Chair
21"Wx34.5"Hx25.75"D
Item Weight: 7 lbs

5YR



7610
Stacking Poolside Chair
24"Wx30"Hx32.5"D
Item Weight: 7 lbs

3YR



7720
Four-Position Stacking Chaise
26.75"Wx46.75"Hx63"D
Reclined Length = 75.5"
Item Weight: 13 lbs

3YR



8080
Four-Position Lay Flat Stacking
Armless Chaise
26.5"Wx42.5"Hx66"D
Reclined Length = 77.5"
Item Weight: 15.5 lbs

3YR



7L30
Four-Position Lay Flat Stacking
Armless Chaise
27"Wx43"Hx69"D
Reclined Length = 78"
Item Weight: 16 lbs

5YR

Additional Features & Benefits Gardenella Sling

- First introduced as the Gardenella Sling Collection in 1977. Over the last 47 years, we have learned that this simple yet wholesome collection is unstoppable. Reliance Sling has joined forces with our popular Gardenella Sling Collection. All former Reliance Sling items are now available in Gardenella Sling
- Every item in this collection is stackable for easy and convenient storage.
- **7L30 Four-Position Lay-Flat Stacking Armless Chaise** features a 16" seating height for easy in and out. 78" when laid flat.
- Over 1 million units built means this collection has stood the test of time.
- Add-on items: **PCMS Universal Chaise Pad** and **HDPL Attachable Pillow** available, see p. 50 for details.



Helios Contract Sling

Powder Coat Aluminum Frame • Choice of Standard & Accent Marine Grade Polymer (MGP) or Rustic Polymer Arm Accents
 • Available in Sling • Available in Acrylic & Mesh Padded Sling • Sunbrella® Rain & Sunbrella® Stock Book Program



5YR

70C0
 Four Position Stacking Lay Flat Chaise
 27.75"Wx43"Hx69"D
 Reclined Length: 78"
 Item Weight: 21 lbs



Additional Features & Benefits Helios Sling

- Our contemporary Sling Chaise is available with your choice of 8 Standard MGP, 4 Accent MGP or 5 Rustic Polymer Arm Colors.
- **Four Position Stacking Lay Flat Chaise** stacks conveniently to maximize storage space.
- **PCMS Universal Chaise Pad** shown left and **HDPL Attachable Pillow** shown above are available as Add-on items. See p. 50 for details.

Adirondack MGP Sling

Marine Grade Polymer (MGP) / Aluminum Frame • Stainless Hardware • Available in Sling • Available in Acrylic & Mesh Padded Sling
• Available in Sunbrella® Rain & Sunbrella® Stock Book Program



Miami, FL



5YR

9A70
Chat Height Arm Chair
30.75"Wx38.5"Hx29.5"D
Item Weight: 24lbs

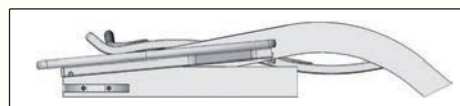


5YR

9A00
Ottoman
23"Wx14"Hx18"D
Item Weight: 9 lbs

Additional Features & Benefits Adirondack MGP Sling

- Wide polymer arms are comfortable to the touch on hot and cold days.
- This collection features hidden stainless steel hardware.
- Both chair and ottoman ship in flat UPS-able packaging, see image below.



5YR = 5 Year Contract Warranty

3YR = 3 Year Contract Warranty

MESH PADDED SLING

Sample images below: Gardenella 7670 Stacking Arm Chair



Sample images below: Gardenella 7720 Four-Position Stacking Chaise



Padded Sling is now available in Sling/Mesh fabric, See available sling fabrics on p. 21.
Front and back of sling are the same pattern.
Sew across lines not only keep padding in all the right places, but add interest to the design

DECODING ITEM NUMBERS: MESH SLING VS. MESH PADDED SLING

MESH SLING



767Y-558-04

Chair
Frame
Style &
Finish

Sling/Mesh
Pat #

Pack Size

MESH PADDED SLING



767W-558-P4

Chair
Frame
Style &
Finish

Sling/Mesh
Pat #

Pack Size

**Designates
Padded Sling**

ACRYLIC PADDED SLING

Sample images below: Gardenella 7670 Stacking Arm Chair



Sample images below: Gardenella 7720 Four-Position Stacking Chaise



Acrylic Padded Sling is constructed with a cushion fabric of your choosing, paired with a preselected coordinating sling fabric on the back. See pp. 19-20 for Acrylic Padded Sling Fabric Selection.

DECODING ITEM NUMBERS: MESH SLING VS. ACRYLIC PADDED SLING

MESH SLING



767Y-558-04

Chair
Frame
Style &
Finish

Sling/Mesh
Pat #

Pack Size

ACRYLIC PADDED SLING



767W-66A-04

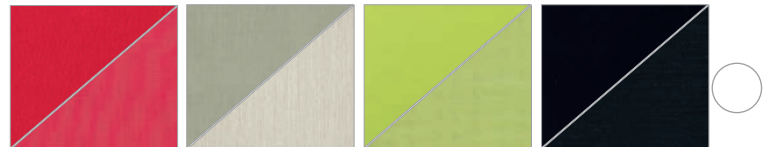
Chair
Frame
Style &
Finish

Acrylic
Pat #

Pack Size

ACRYLIC PADDED SLING FABRIC SELECTION

Our Acrylic Padded Sling is constructed with a cushion fabric of your choosing, paired with a preselected coordinating sling fabric on the back. **Bold** text notates the Cushion Pattern, Asterisk (*) notates preselected coordinating sling fabric. To order: use **bold** cushion pattern number.

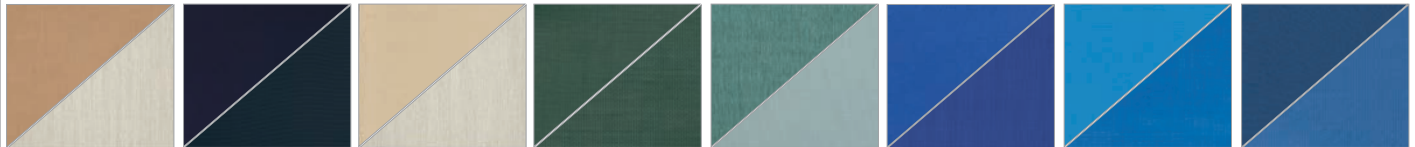


1A Red
1D Red
Grade: A

2A Canvas Seasalt
874 Aug. Oyster
Grade: A

4A Canvas Macaw
38D Lime
Grade: A

5A Black
5D Black
Grade: A



8A Canvas Raffia
874 Aug. Oyster
Grade: A

13A Navy
13D Navy
Grade: A

17A Champagne
874 Aug. Oyster
Grade: A

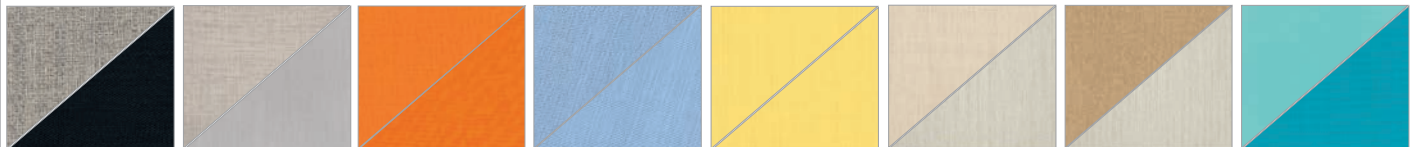
22A Forest Green
22D Forest Green
Grade: A

24A Cast Breeze
14D Augustine Mineral
Grade: A

27A True Blue
70D Atlantis
Grade: A

28A Pacific Blue
28D Pacific Blue
Grade: A

35A Cobalt
35D Cobalt
Grade: A



36A Stone Linen
5D Black
Grade: B

40A Cast Silver
255 Amalfi
Grade: A

41A Tangerine
41D Tangerine
Grade: A

42A Sky
42D Sky
Grade: A

43A Yellow
43D Yellow
Grade: A

44A Canvas Flax
874 Aug. Oyster
Grade: A

54A Stucco
874 Aug. Oyster
Grade: A

57A Aruba
51D Aqua
Grade: A



66A Azure
42D Sky
Grade: A

69A Mango
41D Tangerine
Grade: A

75A Wren
20D Natural
Grade: A

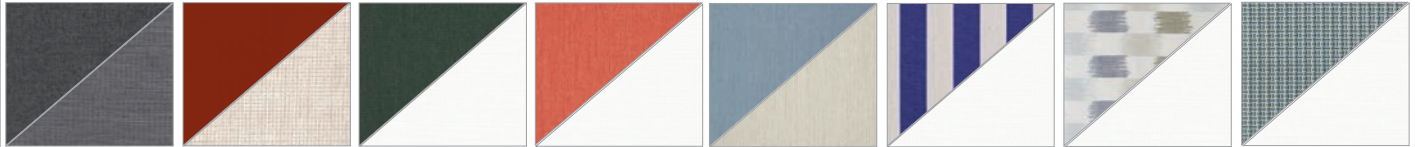
78A Mineral Blue
6D White
Grade: A

79A Peacock
24D Teal
Grade: A

81A Greystone
957 Alloy
Grade: A

86A Indigo
13D Navy
Grade: A

89A Cast
874 Aug. Oyster
Grade: A



90A Slate
872 Aug. Pewter
Grade: A

91A Canvas Henna
20D Natural
Grade: A

92A Cast Ivy
6D White
Grade: A

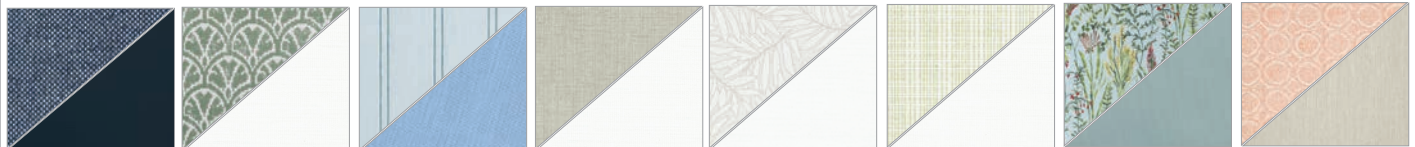
93A Canvas Persimmon
6D White
Grade: A

95A Canvas Haze
874 Aug. Oyster
Grade: A

136 Blue White Stripe
6D White
Grade: A

154 Dream Mist
6D White
Grade: B

164 Conte River
6D White
Grade: C



167 Nurture Indigo
13D Navy
Grade: B

168 Garcia Spring
6D White
Grade: C

172 Wayward Sky
42D Sky
Grade: C

173 Marvel Sage
06D White
Grade: A

184 Lively Sage
06D White
Grade: B

187 Benson Chive
06D White
Grade: B

188 Estelle Mineral
14D Augustine Mineral
Grade: D

192 Koto Clay
874 Aug. Oyster
Grade: C



193 Garcia Guava
874 Aug. Oyster
Grade: C

194 Wayward Charleston
874 Aug. Oyster
Grade: C

196 Remix Mesa
874 Aug. Oyster
Grade: A

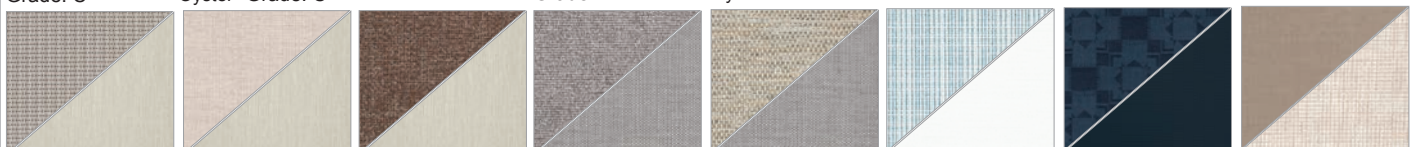
197 Remix Camel
874 Aug. Oyster
Grade: A

198 Mainstreet Putty
874 Aug. Oyster
Grade: C

199 Benson Honey
06D White
Grade: B

212 Dream Dune
874 Aug. Oyster
Grade: B

251 Nurture Haze
874 Aug. Oyster
Grade: B



280 Conte Linen
874 Aug. Oyster
Grade: C

283 Marvel Linen
874 Aug. Oyster
Grade: A

286 Kismet Teak
874 Aug. Oyster
Grade: B

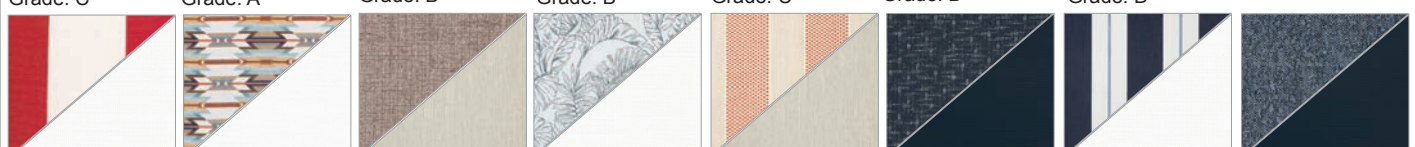
290 Kismet Wren
957 Alloy
Grade: B

293 Mainstreet Dove
957 Alloy
Grade: C

294 Benson Lagoon
06D White
Grade: B

298 Silver Lake Indigo
13D Navy
Grade: D

462 Sahara
20D Natural
Grade: B



495 Ross
6D White
Grade: B

496 Wyeth Trail Sunset
06D White
Grade: D

497 Marvel Mushroom
874 Aug. Oyster
Grade: A

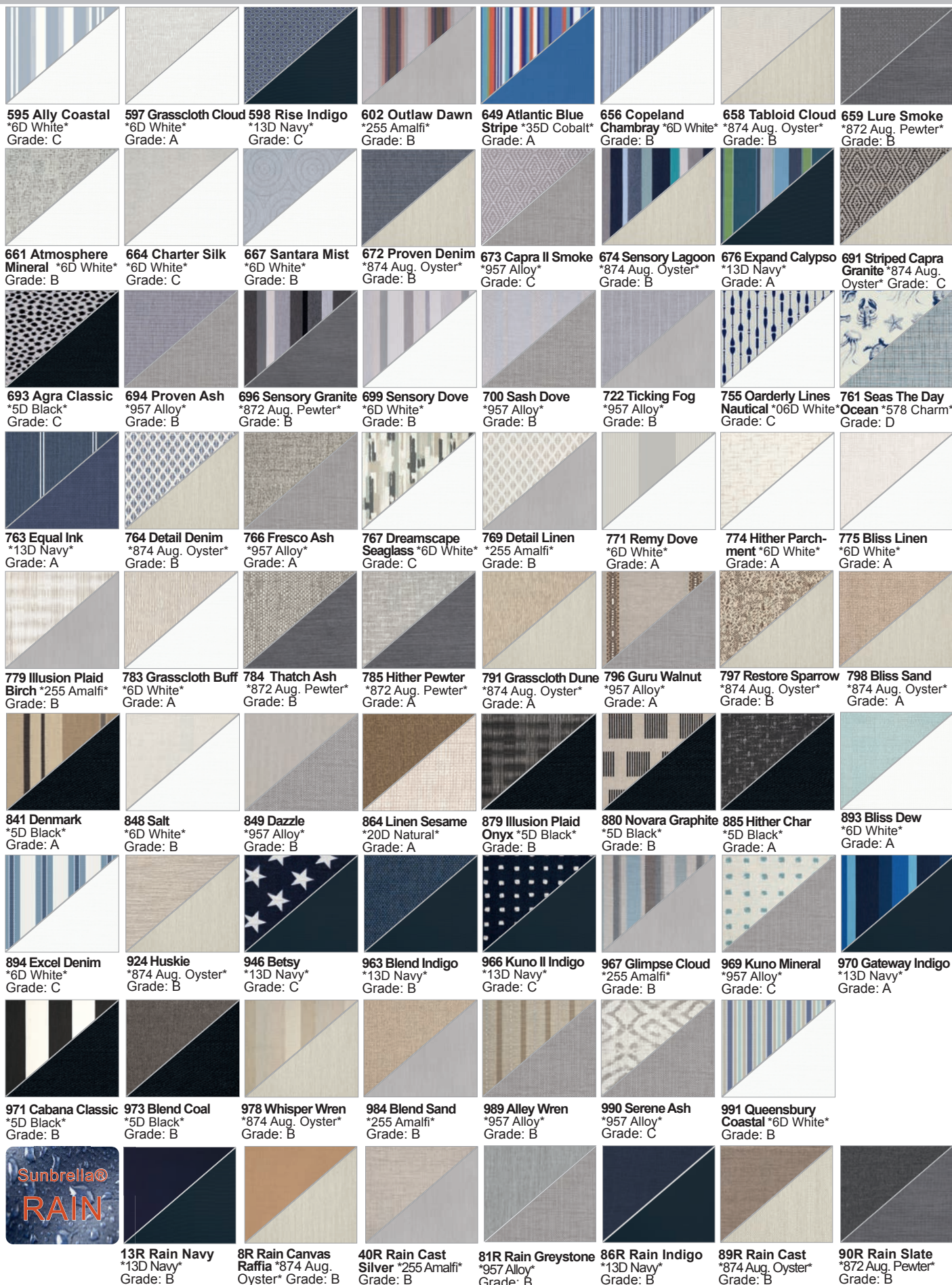
584 Calm Laurel
6D White
Grade: C

587 Royal Guava
874 Aug. Oyster
Grade: B

591 Hither Twilight
13D Navy
Grade: A

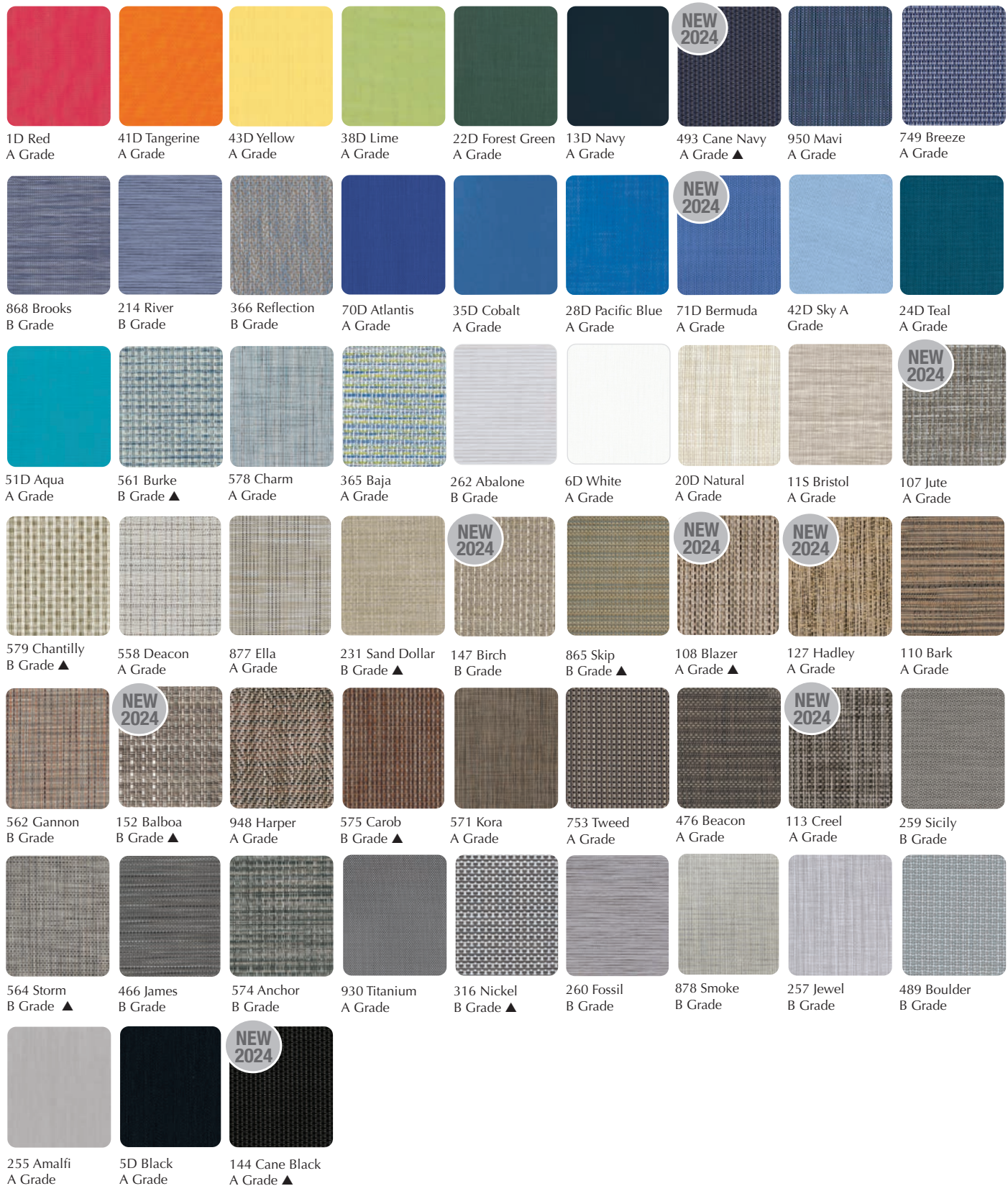
593 Relate Harbor
6D White
Grade: A

594 Restore Indigo
13D Navy
Grade: B



SLING FABRIC SELECTION See our full line catalog for our complete fabric selection

Fabric for Sling Products Only... The fabrics below represent our most popular fabrics for Sling and Mesh Padded Sling (some exclusions) applications but we have 82 sling fabrics available in our full line catalog. For Acrylic Padded Sling fabric selection, see pp. 19-20.



▲ Symbol denotes fabric not available on HDPL Attachable Pillow or Mesh Padded Sling

RECENT INSTALLATIONS SLING & STRAP



**KARTRITE RESORT & INDOOR WATERPARK
MONTICELLO, NY**



SOAKY MOUNTAIN WATERPARK, SEVIERVILLE, TN



**THE RESORT AT MASSEY'S LANDING
MILLSBORO, DE**



**KARTRITE RESORT & INDOOR WATERPARK
MONTICELLO, NY**



**JAYHAWK CLUB
LAWRENCE, KS**



FEATURES & BENEFITS STRAP


STRAP COLLECTIONS ON PP. 23-24

2" wide extruded vinyl straps made of 100% virgin vinyl and UV stabilizers for colorfastness.

Patented straps (US Patent #6,523,904) lock securely in specially designed channels.

14 Available strap colors, paired with 9 textured powdercoat frame finishes.

Durable replaceable plastic glides protect patio surface.



Individual straps can be easily replaced if necessary.



Strong, durable construction.

Stainless Steel and aluminum hardware resists corrosion.


Resilient strapping won't permanently sag after long use.

Custom Strap Selection

The 2" Custom Strap colors listed below are available on our Reliance Contract Strap Collection. Note: There are no minimums on our custom strap program (other than our standard packs) but care must be taken when ordering to specify the desired straps and their arrangement on the chairs and chaises. Due to the custom nature of this product, there is a 50% deposit required on custom strap orders and a 30% Restocking Fee on any returned custom strap order.

| | | | | | | | | |
|--|---|---|---|---|---|---|---|---|
|  |  |  |  |  |  |  |  |  |
| White Pat# 066 | Snow Pat# 057 | Warm Grey Pat# 0YY | Desert Pat#0DD | Beachwood Pat# 0JJ | Kona Pat# 0KK | Storm Pat# 0FF | Graphite Pat# 0RR | Black Pat# 777 |
|  |  |  |  |  | | | | |
| Pebble Pat# 001 | Forest Green Pat# 042 | Navy Pat# 0NN | Cobalt Pat# 035 | Turquoise Pat# 028 | | | | |

Textured Powdercoat Frame Color Options

| | | | | | | | | |
|--|---|---|---|---|---|---|---|---|
|  |  |  |  |  |  |  |  |  |
| White | Snow | Warm Grey | Desert | Beachwood | Kona | Storm | Graphite | Black |

Reliance Contract Strap

Powder Coat Aluminum Frame • 2" Vinyl Welded Strap



THE KARTRITE RESORT & INDOOR WATERPARK
MONTICELLO, NY



8R60
Stacking Bistro Chair
21"Wx34.5"Hx25.75"D
Item Weight: 9 lbs

5YR



7R30
Four-Position Lay Flat Stacking Armless Chaise
27"Wx43"Hx69"D
Reclined Length = 78"
Item Weight: 21.25 lbs

5YR

Additional Features & Benefit Reliance Strap

- All Reliance Strap items are stackable for easy/convenient storage!
- **7R30 Four-Position Lay-Flat Stacking Armless Chaise** features a 16" seating height for easy in and out. 78" when laid flat.
- Create a custom look by mixing and matching your strap colors!
- For a Coordinating Sling Collection, Please see the Gardenella Sling Collection featured on p.14.
- Add-on items: **PCMS Universal Chaise Pad** and **HDPL Attachable Pillow** available, see p. 50 for details.

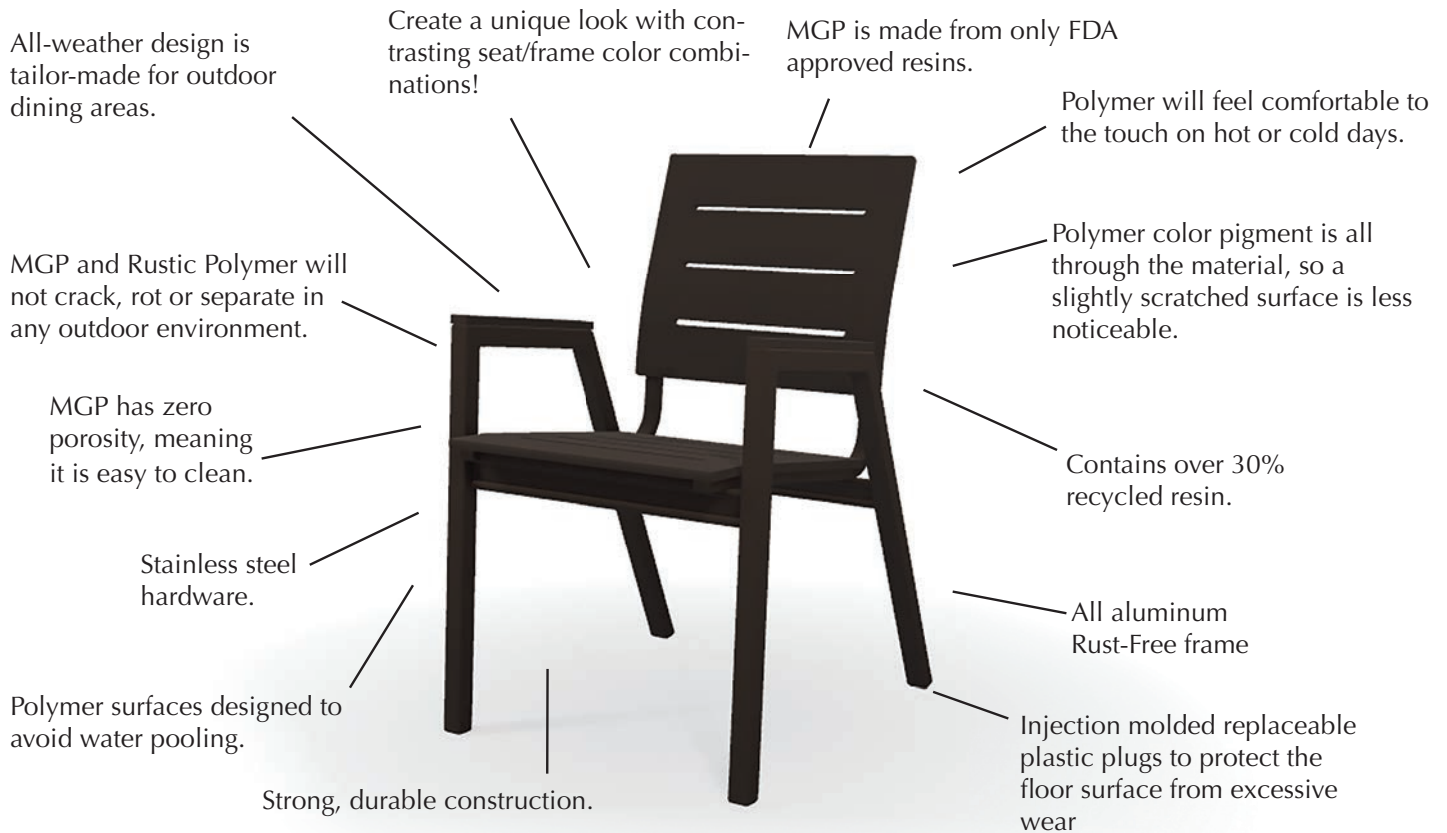


5YR = 5 Year Contract Warranty

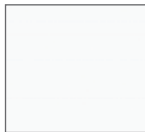
3YR = 3 Year Contract Warranty

FEATURES & BENEFITS POLYMER/ALUMINUM PRODUCTS

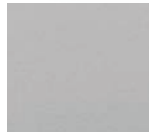
POLYMER/ALUMINUM COLLECTIONS ON PP. 25-30



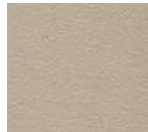
Standard MGP Frame Finish Selection



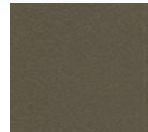
P50 Snow



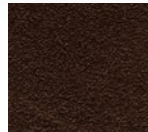
PY0 Warm Grey



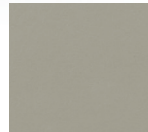
P60 Desert



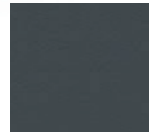
P40 Beachwood



P10 Kona



PF0 Storm

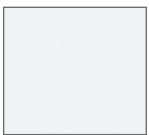


P30 Classic Graphite



P70 Black

Textured Powdercoat Frame Color Options



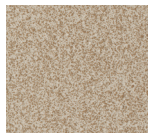
White



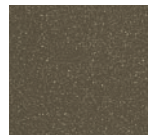
Snow



Warm Grey



Desert



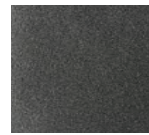
Beachwood



Kona



Storm



Graphite



Black

Accent MGP Color Selection



PC0 Cranberry



PH0 Hunter



PQ0 Aqua



PN0 Navy

The Accent MGP Colors are only available in the following collections: Bazza Bench and Sling, Avant, Newport, Belle Isle Cushion and Sling, Porch Swing, Plymouth Bay, Helios Sling, select MGP tables, select Fire tables and Patio Accessories.

Rustic Polymer Color Selection



RG0 Cape Grey



RX0 Boardwalk



RU0 Chestnut



RT0 Teak



RL0 Laguna

The Rustic Polymer Colors are only available in the following collections: St. Catherine Cushion & Sling, Wexler Cushion and Sling, Welles Cushion, Belle Isle Cushion & Sling, Porch Swing, Bazza Bench and Sling, Plymouth Bay, Avant, Newport, Helios Sling, Rustic Polymer Top tables, select Fire tables and Patio Accessories.

POLYMER/ALUMINUM PRODUCTS BY STYLE

CHAT CHAIR



1N30 Newport

DINING ARM CHAIRS



8Z60 Bazza



1N70 Newport

BALCONY HEIGHT ARMLESS CHAIRS



8930 Avant



8ZG0 Bazza



89C0 Avant

BALCONY & BAR HEIGHT ARM CHAIRS



1N80 Newport



1N90 Newport

BENCHES



8Z40 Bazza



8Z70 Bazza



8Z80 Bazza

OTTOMAN



1N00 Newport

ARMLESS DINING CHAIRS



8900 Avant



89L0 Avant

BAR HEIGHT ARMLESS CHAIRS



8940 Avant



8ZF0 Bazza



89B0 Avant

PICNIC TABLE



1P80 Plymouth Bay

Avant

Powder Coat Aluminum Frame • Choice of Marine Grade Polymer or Rustic Polymer seat/back with Vertical Slat Pattern



8900
Stacking Bistro Chair
15.5"Wx32.75"Hx20.25"D
Item Weight: 8 lbs

5YR



89L0
Stacking Dining Chair
19"Wx34"Hx24"D
Item Weight: 16 lbs

5YR



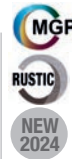
8ZG0
Coordinating Bazza
Balcony Height Stool
17.5"Wx31"Hx17"D
Item Weight: 13 lbs

5YR



8930
Balcony Height Stacking
Armless Chair
15.75"Wx40.5"Hx20.25"D
Item Weight: 12 lbs

5YR



89C0
Balcony Height Armless
Swivel Chair (360°)
16.5"Wx40"Hx19.5"D
Item Weight: 16 lbs

5YR

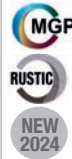


8ZF0
Coordinating Bazza Bar
Height Stool
17.5"Wx35"Hx17"D
Item Weight: 14 lbs

5YR

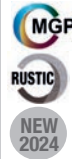
Additional Features & Benefits Avant

- **8900, 89L0, 8930, 8940** chairs are stackable for easy and convenient storage! (See image to right)
- Available in 9 powdercoat frame finishes, 12 MGP colors and 5 Rustic Polymer Colors
- Efficiently sized frame with small footprint is perfect for restaurant applications where space is a premium.
- All Avant items will have a vertical slat seat/back pattern on all items, except for 8ZG0 and 8ZF0 stools.
- Frame is fully welded for extra durability.
- Features plastic bumpers on footrest
- Create a unique look with contrasting seat/back and frame colors.



8940
Bar Height Stacking
Armless Chair
16.75"Wx44.5"Hx20.25"D
Item Weight: 14 lbs

5YR



89B0
Bar Height Armless
Swivel Chair (360°)
18"Wx44"Hx19.5"D
Item Weight: 17 lbs

5YR

Bazza Bench

Powder Coat Aluminum Frame • Choice of Marine Grade Polymer (MGP) or Rustic Polymer Surface • Stainless Hardware



MAKE-A-WISH
TRUMBULL, CT



8Z60
Stacking Bistro Chair
21"Wx34"Hx24.5"D
Item Weight: 19 lbs

5YR



8ZG0
Balcony Height Stool
17.5"Wx31"Hx17"D
Item Weight: 13 lbs

5YR



8ZF0
Bar Height Stool
17.5"Wx35"Hx17"D
Item Weight: 14 lbs

5YR



8Z40
Stacking 56" Armless Bench
56"Wx35.75"Hx26"D
Item Weight: 44 lbs

5YR



8Z70
54" Flat Bench
54"Wx18"Hx17.5"D
Item Weight: 25 lbs

5YR



8Z80
64" Flat Bench
64"Wx18"Hx17.5"D
Item Weight: 37 lbs

5YR

Additional Features & Benefits Bazza

- Select Bazza items stack for easy and convenient storage! (See image right)
- All Bazza items are available in 9 powdercoated frame finishes, 12 MGP Seat/Back Colors and 5 Rustic Polymer Seat/Back Colors.
- Seat and back feature through holes for maximum comfort and aesthetic flare.
- The Polymer surface will remain comfortable to the touch on hot or cold days.
- Coordinating sling collection featured on p. 9.



MGP Seat/Back patterns will have a horizontal slot pattern as shown above.

5YR = 5 Year Contract Warranty

3YR = 3 Year Contract Warranty

Plymouth Bay

Powder Coat Aluminum Frame • Choice of Marine Grade Polymer (MGP) or Rustic Polymer Surface • Stainless Hardware



MAKE-A-WISH
TRUMBULL, CT



5YR

1P80
Picnic Table
64"Wx29"Hx66.25"D
Item Weight: 120 lbs
Seat Height: 18"

Additional Features & Benefits Plymouth Bay

- Available in 9 powdercoated frame finishes, 12 MGP Colors and 5 Rustic Polymer Colors.
- Table features an umbrella hole.
- Seat is designed with through holes for maximum comfort and aesthetic flare.
- The Polymer surfaces will remain comfortable to the touch on hot or cold days.

Newport

Powder Coat Aluminum Frame • Choice of MGP and Rustic Polymer Surface • Stainless Hardware



MAKE-A-WISH
TRUMBULL, CT



1N30
Adirondack Chair
30"Wx37.5"Hx32"D
Item Weight: 31 lbs

5YR



1N70
Dining Arm Chair
28"Wx38"Hx28"D
Item Weight: 27 lbs

5YR



1N00
Ottoman
20.75"Wx16"Hx18"D
Item Weight: 12 lbs

5YR



1N80
Balcony Height
Swivel Arm Chair
28"Wx47"Hx28"D
Item Weight: 38 lbs

5YR



1N90
Bar Height Swivel
Arm Chair
28"Wx51"Hx28"D
Item Weight:
39 lbs

5YR

Additional Features & Benefits Newport

- Frame features durable aluminum construction with stainless steel hardware.
- All Newport items are available in 9 powdercoated frame finishes, 12 MGP Seat/Back Colors and 5 Rustic Polymer Seat/Back Colors.
- Color and wood grain go completely through the material so small scratches are less noticeable.
- Polymer surface will remain comfortable to the touch on hot or cold days.



**DORSET FIELD CLUB
DORSET, VT**

5YR = 5 Year Contract Warranty

3YR = 3 Year Contract Warranty

FEATURES & BENEFITS Cushion

CUSHION COLLECTIONS ON PP. 31-40

MARINE GRADE POLYMER

Wide arms provide maximum comfort.

MGP Frame is available in our 8 Standard MGP Colors.

All cushions are constructed with your choice of 140 high performance outdoor quality fabrics.

MGP color pigment is all through the material, so a slightly scratched surface is less noticeable.



Vinyl Strap Suspension for seat provides long term comfort.

Cushions are easy to replace.

MGP is made from only FDA approved resins.

MGP will not crack, rot or separate in any outdoor environment

Strong, durable construction.

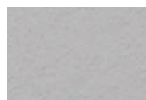
Choose your own eye catching color combinations.

Stainless steel hardware.

STANDARD MGP FRAME FINISH SELECTION



P50 Snow



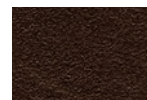
PY0 Warm Grey



P60 Desert



P40 Beachwood



P10 Kona



PF0 Storm



P30 Classic Graphite



P70 Black

ACCENT MGP COLOR OPTIONS (Available on select items)



PH0 Hunter



PC0 Cranberry



PQ0 Aqua



PN0 Navy

CUSHION PRODUCTS BY STYLE

ARM / ARMLESS CHAIR



8610 Leeward



KK70 St. Catherine w/ MGP Arm



K070 St. Catherine w/ Rustic Arm



1L70 Larssen



5W70 Wexler w/ MGP Arm



R070 Wexler w/ Rustic Arm



W070 Welles w/ Welting



D070 Welles no Welting



W010 Welles w/ Welting



D0F0 Welles no Welting



W080 Welles w/ Welting



D080 Welles no Welting

ROCKERS



B070 Belle Isle



B010 Belle Isle



B020 Belle Isle



5W30 Wexler w/ MGP Arm



R030 Wexler w/ Rustic Arm

OTTOMAN



85S0 Leeward/St. Catherine



AA00 Larssen



5W00 Wexler



W000 Welles w/ Welting



D0T0 Welles no Welting



B000 Belle Isle

TWO SEAT LOVESEAT



8640 Leeward



KK40 St. Catherine w/ MGP Arm



K040 St. Catherine w/ Rustic Arm



1L40 Larssen



5W40 Wexler w/ MGP Arm



R040 Wexler w/ Rustic Arm



W040 Welles w/ Welting



D040 Welles no Welting

TEXTURED POWDERCOATED ALUMINUM

Choose MGP or Rustic Polymer Arms on select collections.

All cushions are constructed with your choice of 140 high performance outdoor quality fabrics.

Available in our 9 powdercoated frame colors.

Vinyl Strap Suspension for seat provides long term comfort.

Strong, extra durable construction.

Stainless steel hardware.

Choose your own eye catching color combinations.

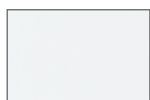
Cushions are easy to replace.

Breathable cushions assist drying and extends the life of the cushion.

Durable replaceable plastic glides protect patio surface.



TEXTURED POWDERCOAT FRAME COLOR OPTIONS



White



Snow



Warm Grey



Desert



Beachwood



Kona



Storm



Graphite



Black

RUSTIC POLYMER COLOR OPTIONS (Available on select items)



RG0
Cape Grey



RX0
Boardwalk



RU0
Chestnut



RT0
Teak



RL0
Laguna

THREE SEAT SOFA



8650 Leeward



KK50 St. Catherine
w/ MGP Arm



K050 St. Catherine
w/ Rustic Arm



1L50 Larssen



5W50 Wexler w/
MGP Arm



R0R0 Wexler w/
Rustic Arm



W050 Welles
w/ Welting



D030 Welles
no Welting



B090 Belle Isle

CUSHION CHAISE



86N0 Leeward

SECTIONALS

END SECTIONS



8550 Leeward



8540 Leeward



VL10 Larssen



B0R0 Belle Isle



B0L0 Belle Isle

ARMLESS SECTIONS



8510 Leeward



85D0 Leeward



VL30 Larssen



B0S0 Belle Isle

CORNER SECTIONS



8560 Leeward



VL60 Larssen



VLC0 Larssen



AC00 Larssen



B0C0 Belle Isle

5YR = 5 Year Contract Warranty

3YR = 3 Year Contract Warranty

Leeward MGP Cushion

Marine Grade Polymer (MGP) Frame • Stainless Hardware • Available in Sunbrella® Rain & Sunbrella® Stock Book Program

Additional Features & Benefits

Leeward MGP Cushion

- Coordinates with our Leeward Sling Collection featured on p. 5.
- Extra wide MGP arm provides extra comfort and is comfortable to the touch on hot and cold days.
- Vinyl strap suspension on seat and back provides long term comfort.
- Fabric panel over frame on back provides an upholstered look.
- Set of 2 Furniture Clips included with each sectional piece.
- **86N0 Cushion Chaises** can be connected using ZOCO Chaise Connector Kit.



SOAKY MOUNTAIN WATERPARK
SEVIERVILLE, TN



8610
Hidden Motion Arm Chair
33"Wx39"Hx35"D
Item Weight: 60 lbs

3YR



8640
Hidden Motion Loveseat
56.5"Wx39"Hx35"D
Item Weight: 84 lbs

3YR



8650
Three-Seat Sofa
77.5"Wx39"Hx36"D
Item Weight: 98 lbs

3YR

NEW
2024



86N0
Three-Position Lay Flat
Armless Chaise
23"Wx43.5"Hx77.5"D
Reclined Length: 77.5"
Item Weight: 56 lbs

3YR

NEW
2024



85S0
Ottoman (Sectional)
23"Wx19"Hx23"D
Item Weight: 21 lbs

3YR



8540
Left Arm Two-Seat Hidden
Motion Sectional
52"Wx38.5"Hx34.5"D
Item Weight: 74 lbs

3YR



8550
Right Arm Two-Seat Hidden
Motion Sectional
52"Wx38.5"Hx34.5"D
Item Weight: 74 lbs

3YR

NEW
2024



85D0
Armless Single-Seat Hidden
Motion Sectional
23.5"Wx38.5"Hx34.5"D
Item Weight: 36 lbs

3YR



8510
Armless Single-Seat Fixed
Sectional
23.5"Wx38.5"Hx34.5"D
Item Weight: 35 lbs

3YR



8560
Corner Fixed Sectional
34.5"Wx38.5"Hx34.5"D
Item Weight: 48 lbs

3YR

NEW
2024



50N0
MGP Top Attachable Corner Table
28.5"Wx21.5"Hx28.5"D
Item Weight: 29 lbs
(Compatible with Leeward & Larssen Cushion Sectionals)

3YR

NEW
2024



50F0
MGP Top Attachable
Accessory Table
28.5"Wx14"Hx28.5"D
Item Weight: 26 lbs
(Compatible with Leeward & Larssen Cushion Sectionals)

3YR

NEW
2024



TCT0
Attachable Table Connector Kit
(Set of 2 included with 50N0 & 50F0 tables)

3YR



ZOCO
Add-on Chaise Connector Kit
(Set of 2)
*Compatible with 86N0 Leeward Cushion Chaise

5YR

NEW
2024



NCT0
Ottoman Clip
(Set of 2 included with each 85S0 Ottoman)

3YR



LCT0
Furniture Clip
(Set of 2 included with each sectional seating piece)

3YR

St. Catherine Cushion

Marine Grade Polymer (MGP) Frame • Choice of Marine Grade Polymer (MGP) or Rustic Polymer Arms • Stainless Hardware
• Available in Sunbrella® Rain & Sunbrella® Stock Book Program



H20BX WATERPARK
POWELLS POINT, NC



3YR

KK70
Arm Chair w/ MGP Accents
30"Wx36.25"Hx35.25"D
Item Weight: 33.25 lbs



3YR

K070
Arm Chair w/ Rustic Accents
30"Wx36.25"Hx35.25"D
Item Weight: 31.75 lbs



3YR

KK40
Two-Seater Loveseat w/
MGP Accents
52"Wx36.25"Hx35.25"D
Item Weight: 54.25 lbs



3YR

K040
Two-Seater Loveseat w/
Rustic Accents
52"Wx36.25"Hx35.25"D
Item Weight: 52.75 lbs



3YR

KK50
Three-Seater Sofa w/
MGP Accents
74"Wx36.25"Hx35.25"D
Item Weight: 67.25 lbs



3YR

K050
Three-Seater Sofa w/
Rustic Accents
74"Wx36.25"Hx35.25"D
Item Weight: 65.75 lbs



3YR

85S0
Ottoman (Sectional)
23"Wx19"Hx23"D
Item Weight: 21 lbs

Additional Features & Benefits St. Catherine MGP Cushion

- Stationary ruggedly constructed items perfect for contract settings.
- Available with Rustic Polymer Arms.
- Vinyl strap suspension on seat and back provides long term comfort.
- Fabric panel over frame on back provides an upholstered look.
- Coordinating Sling Collection featured on p. 8.

5YR = 5 Year Contract Warranty

3YR = 3 Year Contract Warranty

Larssen Cushion

Powdercoated Aluminum Frame • Available in Sunbrella® Rain & Sunbrella® Stock Book Program • Ready to Assemble



MIAMI, FL



1L70
Arm Chair
30"Wx35.5"Hx33"D
Item Weight: 22 lbs

NEW
2024



1L40
Two-Seat Loveseat
52.5"Wx35.5"Hx33"D
Item Weight: 39 lbs

3YR

NEW
2024



1L50
Three Seat Sofa
75.5"Wx35.5"Hx33"D
Item Weight: 62 lbs

3YR

NEW
2024



VL10
End/Arm Section
32"Wx35"Hx30"D
Item Weight: 26.5 lbs

3YR

NEW
2024



VL30
Armless Single Seat
Section
28.5"Wx35"Hx30"D
Item Weight: 22.5 lbs

3YR

NEW
2024



VL60
Square Corner Section
30"Wx35"Hx30"D
Item Weight: 28 lbs

3YR

NEW
2024



VLC0
Curved Corner Section
30"Wx35"Hx30"D
Item Weight: 29 lbs

3YR



AC00
Curved Backless Corner
Section
28.5"Wx19"Hx28.5"D
Item Weight: 14 lbs

3YR



AA00
Ottoman
28.5"Wx19"Hx28.5"D
Item Weight: 16 lbs

3YR

NEW
2024



50N0
MGP Top Attachable
Corner Table
28.5"Wx21.5"Hx28.5"D
Item Weight: 29 lbs
(Compatible with Leeward & Larssen Cushion Sectionals)

3YR

NEW
2024



50F0
MGP Top Attachable
Accessory Table
28.5"Wx14"Hx28.5"D
Item Weight: 26 lbs
(Compatible with Leeward & Larssen Cushion Sectionals)

3YR

NEW
2024



TCT0
Attachable Table
Connector Kit
(Set of 2 included with
50N0 & 50F0 tables)

3YR



ACT0
Sectional Furniture Clip
(set of 2 included with
each seating piece)

Additional Features & Benefits Larssen Cushion

- Clean contemporary style perfect for today's modern resorts.
- Wide aluminum arm provides extra comfort.
- Vinyl strap suspension on seat and back provides long term comfort.
- Arm Chair, Two-Seat Loveseat and Three Seat Sofa feature fabric panel over frame on back providing an upholstered look.

Wexler Cushion

Marine Grade Polymer (MGP) Frame • Stainless Hardware • Choice of Marine Grade Polymer (MGP) or Rustic Polymer Arms
• Available in Sunbrella® Rain & Sunbrella® Stock Book Program



| | | | | | |
|--|---|---|---|--|---|
|  <p>5W70 Chat Height Arm Chair w/ MGP Arms 29.5"Wx38"Hx31"D Item Weight: 34 lbs</p> <p>3YR</p> |  <p>R070 Chat Height Arm Chair w/ Rustic Polymer Arms 29.5"Wx38"Hx31"D Item Weight: 34 lbs</p> <p>3YR</p> |  <p>5W30 Chat Height Rocker w/ MGP Arms 29.5"Wx35"Hx33"D Item Weight: 37 lbs</p> <p>3YR</p> |  <p>R030 Chat Height Rocker w/ Rustic Polymer Arms 29.5"Wx35"Hx33"D Item Weight: 37 lbs</p> <p>3YR</p> |  <p>5W40 Chat Height Two-Seat Loveseat w/ MGP Arms 51.5"Wx38"Hx31"D Item Weight: 48 lbs</p> <p>3YR</p> |  <p>R040 Chat Height Two-Seat Loveseat w/ Rustic Polymer Arms 51.5"Wx38"Hx31"D Item Weight: 48 lbs</p> <p>3YR</p> |
|  <p>5W50 Chat Height Three-Seat Sofa w/ MGP Arms 74.5"Wx38"Hx31"D Item Weight: 64 lbs</p> <p>3YR</p> |  <p>R0R0 Chat Height Three-Seat Sofa w/ Rustic Polymer Arms 74.5"Wx38"Hx31"D Item Weight: 64 lbs</p> <p>3YR</p> |  <p>5W00 Ottoman 25"Wx17.5"Hx23.5"D Item Weight: 15 lbs</p> <p>3YR</p> |  <p>5W80 End Table 23"Wx19.75"Hx23"D Item Weight: 12 lbs Table Top Available in MGP & Rustic Polymer</p> <p>3YR</p> |  <p>5W90 Coffee Table 42"Wx19.75"Hx24"D Item Weight: 21 lbs Table Top Available in MGP & Rustic Polymer</p> <p>3YR</p> | |

Additional Features & Benefits Wexler Cushion

- Stationary ruggedly constructed items perfect for contract settings.
- Vinyl strap suspension on seat and back provides long term comfort.
- Fabric panel over frame on back provides an upholstered look.
- Coordinating Sling Collection featured on p. 7.

5YR = 5 Year Contract Warranty

3YR = 3 Year Contract Warranty

Welles Cushion

Powder Coat Aluminum Frame • Choice of Marine Grade Polymer (MGP) or Rustic Polymer Arms
• Available in Sunbrella® Rain & Sunbrella® Stock Book Program



W070
Arm Chair
w/ Welting
26"Wx38.25"Hx35.5"D
Item Weight: 20 lbs

3YR



D070
Arm Chair
no Welting
26"Wx38.25"Hx35.5"D
Item Weight: 20 lbs

3YR



W010
Cafe Dining Chair
w/ Welting
24.5"Wx38.25"Hx29"D
Item Weight: 14 lbs

3YR



D0F0
Cafe Dining Chair
no Welting
24.5"Wx38.25"Hx29"D
Item Weight: 14 lbs

3YR



W080
Armless Cafe Dining
Chair w/ Welting
20.5"Wx38.25"Hx28"D
Item Weight: 12 lbs

3YR



D080
Armless Cafe Dining
Chair no Welting
20.5"Wx38.25"Hx28"D
Item Weight: 12 lbs

3YR



W040
Two Seat Loveseat
w/ Welting
48"Wx38.25"Hx35.5"D
Item Weight: 34 lbs

3YR



D040
Two Seat Loveseat
no Welting
48"Wx38.25"Hx35.5"D
Item Weight: 34 lbs

3YR



W050
Three Seat Sofa
w/ Welting
70"Wx38.25"Hx35.5"D
Item Weight: 54 lbs

3YR



D030
Three Seat Sofa
no Welting
70"Wx38.25"Hx35.5"D
Item Weight: 54 lbs

3YR



W000
Ottoman w/ Welting
23.25"Wx18.5"Hx20.75"D
Item Weight: 8 lbs

3YR



D0T0
Ottoman no Welting
23.25"Wx18.5"Hx20.75"D
Item Weight: 8 lbs

3YR



NL80
Round End Table
23"Wx19.5"Hx23"D
Item Weight: 14.5 lbs

3YR

Table Top Available in MGP
& Rustic Polymer



NL30
Oval Coffee Table
42"Wx19.5"Hx24"D
Item Weight: 26 lbs

3YR

Table Top Available in MGP
& Rustic Polymer

Additional Features & Benefits Welles Cushion

- Polymer arm provides extra comfort and is comfortable to the touch on hot and cool days.
- Vinyl strap suspension on seat and back provides long term comfort.
- Fabric panel over frame on back provides an upholstered look.
- Arms and lower leg available in 8 Standard MGP Colors and 5 Rustic Polymer Colors.
- Welles Collection Legs in Rustic Polymer are milled down like natural wood and will have pattern variations, similar to real wood as shown to right.



Belle Isle Cushion

Powder Coat Aluminum Frame • Choice of Marine Grade Polymer (MGP) or Rustic Polymer Arms
• Available in Sunbrella® Rain & Sunbrella® Stock Book Program



LAKE MURRAY, SC



B070 3YR
Arm Chair
w/ Polymer Arms
27.5"Wx38"Hx33"D
Item Weight: 20 lbs



B010 3YR
Supreme Arm Chair w/
Polymer Arms
27.5"Wx43"Hx35.75"D
Item Weight: 22 lbs



B020 3YR
Supreme Adjustable Back
Chair w/ Polymer Arms
28.25"Wx43"Hx34.5"D
Reclined Length= 51.5"
Item Weight: 25.5 lbs



B090 3YR
Three-Seat Sofa w/
Polymer Arms
71.5"Wx38"Hx33"D
Item Weight: 48 lbs



B000 3YR
Ottoman
25"Wx18"Hx19"D
Item Weight: 8 lbs



B0R0 3YR
Right Arm Two-Seat
Section w/ Polymer
Arm
48"Wx37.5"Hx33"D
Item Weight: 29 lbs



B0L0 3YR
Left Arm Two-Seat
Section w/ Polymer
Arm
48"Wx37.5"Hx33"D
Item Weight: 29 lbs



B0C0 3YR
Corner Section
34.5"Wx37.5"Hx34.5"D
Item Weight: 28 lbs



B0S0 3YR
Armless Single-Seat
Section
22.5"Wx37.5"Hx33"D
Item Weight: 14 lbs

Additional Features & Benefits Belle Isle Cushion

- Coordinates with our Belle Isle Sling Collection featured on p. 10.
- Wide polymer arm provides extra comfort and is comfortable to the touch on hot and cool days.
- Vinyl strap suspension on seat and back provides long term comfort.
- Fabric panel over frame on back provides an upholstered look.
- Supreme back heights add a level of sophistication to your design.
- **Adjustable Back Chair** can be used with the ottoman to make a two piece chaise for tighter spaces.

CUSHION FABRIC SELECTION See our full line catalog for our complete fabric selection

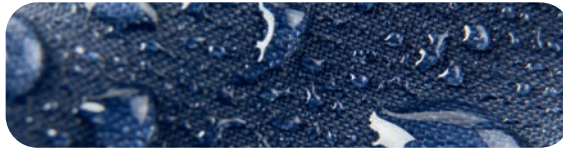
Fabric for Cushion Products Only... The fabrics below represent our most popular fabrics for Cushion applications but we have 140 cushion fabrics available in our full line catalog.

| | | | | | | | | |
|--|---|---|---|---|--|---|---|---|
|  |  |  |  |  |  |  |  |  |
| 91A Canvas Henna A Grade | 1A Red A Grade | 93A Canvas Persimmon A Grade | 196 Remix Mesa A Grade | 69A Mango A Grade | 41A Tangerine A Grade | 43A Yellow A Grade | 6A White A Grade | 848 Salt B Grade |
|  |  |  |  |  |  |  |  |  |
| 174 Nurture White A Grade | 597 Grasscloth Cloud A Grade | 658 Tabloid Cloud B Grade | 774 Hither Parchment A Grade | 775 Bliss Linen A Grade | 783 Grasscloth Buff A Grade | 44A Canvas Flax A Grade | 17A Champagne A Grade | 791 Grasscloth Dune A Grade |
|  |  |  |  |  |  |  |  |  |
| 798 Bliss Sand A Grade | 984 Blend Sand B Grade | 197 Remix Camel A Grade | 280 Conte Linen C Grade | 293 Mainstreet Dove C Grade | 199 Benson Honey B Grade | 198 Mainstreet Putty C Grade | 54A Stucco A Grade | 8A Canvas Raffia A Grade |
|  |  |  |  |  |  |  |  |  |
| 75A Wren A Grade | 864 Linen Sesame A Grade | 286 Kismet Teak B Grade | 462 Sahara B Grade | 89A Cast A Grade | 40A Cast Silver A Grade | 924 Huskie B Grade | 785 Hither Pewter A Grade | 36A Stone Linen B Grade |
|  |  |  |  |  |  |  |  |  |
| 849 Dazzle B Grade | 81A Greystone A Grade | 694 Proven Ash B Grade | 659 Lure Smoke B Grade | 973 Blend Coal B Grade | 90A Slate A Grade | 885 Hither Char A Grade | 5A Black A Grade | 661 Atmosphere Mineral B Grade |
|  |  |  |  |  |  |  |  |  |
| 95A Canvas Haze A Grade | 251 Nurture Haze B Grade | 164 Conte River C Grade | 167 Nurture Indigo B Grade | 963 Blend Indigo B Grade | 672 Proven Denim B Grade | 13A Navy A Grade | 86A Indigo A Grade | 591 Hither Twilight A Grade |
|  |  |  |  |  |  |  |  |  |
| 35A Cobalt A Grade | 66A Azure A Grade | 27A True Blue A Grade | 28A Pacific Blue A Grade | 42A Sky A Grade | 78A Mineral Blue A Grade | 57A Aruba A Grade | 294 Benson Lagoon B Grade | 893 Bliss Dew A Grade |
|  |  |  |  |  |  |  | | |
| 79A Peacock A Grade | 24A Cast Breeze A Grade | 22A Forest Green A Grade | 92A Cast Ivy A Grade | 2A Canvas Seasalt A Grade | 187 Benson Chive B Grade | 4A Canvas Macaw A Grade | | |

Sunbrella® RAIN

WATERPROOF PERFORMANCE FABRICS

Sunbrella® Rain Fabrics available on all Cushion and all Padded Sling Collections. (some exclusions apply)



* Symbol denotes fabric not available on Throw Pillows.

● Available only on Cushion and Padded Sling Collections.



13R Rain Navy
B Grade ● *



8R Rain Canvas
Raffia
B Grade ● *



40R Rain Cast
Silver
B Grade ● *



81R Rain Greystone
B Grade ● *



86R Rain Indigo
B Grade ● *



89R Rain Cast
B Grade ● *



90R Rain Slate
B Grade ● *

RECENT INSTALLATIONS CUSHION



THREE NEEDS BREWING, BURLINGTON, VT



SOAKY MOUNTAIN WATERPARK, SEVIERVILLE, TN



SOAKY MOUNTAIN WATERPARK, SEVIERVILLE, TN



H2OBX WATERPARK POWELLS POINT, NC



H2OBX WATERPARK POWELLS POINT, NC

Propane Patio Heater

Powder Coat Aluminum and Marine Grade Polymer Frame • Stainless Steel Heater



Additional Features & Benefits Propane Patio Heater

- Electronic Ignition - 46,000 BTU
- Holds a common 20lb propane tank (not included).
- Match your Propane Patio Heater with your existing table and chairs!
- **7F50 Propane Patio Heater** can be used Free-standing or under any of our Dining, Balcony or Bar tables with 4-corner legs.
- Evenly distribute the heat to each guest around the table!
- **7F50 Propane Patio Heater** can hold up to (3) sets of add-on weights for free-standing applications.

Available Add-on Items



3YR

7F50
Propane Patio Heater
32"Wx32"Dx90"H
Weight: 55 lbs



3YR

7F10
Add-on weights for
Propane Patio Heater
(set of 2)
Combined Weight of 2=10 lbs



3YR

7F00
Lower Estate Pole
(for using Umbrella with
Patio Heater)



3YR

7FG0
Balcony Height Table Top
Adapter for 7F50 Patio
Heater



3YR

7FH0
Bar Height Table Top Adapt-
er for 7F50 Patio Heater

4 UNIQUE APPLICATIONS

FREE-STANDING

The 7F50 Propane Patio Heater is designed as a Free-Standing item. For windy regions, up to 3 sets of Add-on weights can be installed for extra stability. See p. 41 for details.



7F10 Add-on Weights

7F50 Propane Patio Heater

UNDER EXISTING TABLES

(Compatible on table designs with 4-corner legs)

The 7F50 Propane Patio Heater can be used under several of our Dining, Balcony and Bar Height Tables. The vertical pole was designed at the perfect diameter to be used with any table with a standard umbrella hole. The Patio Heater can be used under any table listed below.



+ Desired Table
Top &
Compatible
Legs



=



7F50 Propane Patio Heater

DINING HEIGHT LEGS

- 3850LEG
- NL50LEG
- 2M00LEG
- 5M00LEG
- 5ML0LEG
- 5290 42" x 120" Ext. Table

BALCONY HEIGHT LEGS

- 38100LG
- 3M00LEG
- 6M00LEG
- 6ML0LEG

BAR HEIGHT LEGS

- 38000LG
- 4M00LEG
- 7M00LEG
- 7ML0LEG

SUNNY-DAY COMPATIBLE!

The 7F50 Propane Patio Heater can be converted to an umbrella base during the day by utilizing the New 7F00 Lower Estate Pole and a Commercial Market Umbrella!



7F00 Lower
Estate Pole



7F50 Propane Patio Heater

USE AS TABLE BASE

Featuring, Balcony and Bar Height Table Top Adapters for the 7F50 Patio Heater. The adapter allows your Patio Heater base to double as a table base on smaller scale Balcony & Bar Tables! The Diagram shows how to create the balcony and bar combinations shown below.



7FG0 Balcony Height
Adapter or
7FH0 Bar Height Adapter



Appropriate style
table top (compatible
tops outlined below)

7F50 Propane Patio Heater



**VALUE
HAMMERED
H980 30" Rd.
Table Top Only**



**VALUE
HAMMERED
H910 36" Sq. Table
Top Only**



**VALUE
HAMMERED
H940 42" Rd.
Table Top Only**



**MGP (Slat & Dash)
T110 36" Sq. Table
Top Only**



**MGP (Slat & Dash)
T120 42" Rd. Table
Top Only**



**MGP (Slat & Dash)
TP90 42" Sq. Table
Top Only**



**RUSTIC
T110 36" Sq. Table
Top Only**



**RUSTIC
T120 42" Rd.
Table Top Only**



**RUSTIC
TP90 42" Sq. Table
Top Only**



**ORIGINS
CP40 42" Sq. Table
Top Only**

FIRE TABLE SELECTION

MGP SLAT TOP FIRE TABLES & ACCESSORIES

Accent MGP colors available only on top surface of Fire Tables (sides will be same color as powdercoat frame except White frames will have Snow MGP side panels). Standard and Accent MGP Top options shown below. Electronic Ignition, 55,000 BTU (3F10 rectangle), 60,000 BTU (Round), 100,500 BTU (6F40 Rectangle), Propane or Natural Gas, includes Clear Crystal Fire Gems.



3F40
42" Rd. MGP Top
Fire Table
42"Wx42"Dx23"H
Weight: 95 lbs

3YR



Center Cover
Included



4F00-GLS
25" Round Tempered
Glass Surround for
42" & 54" Fire Tables



3F10
36" x 54" Rect. MGP Top
Fire Table
36"Wx54"Dx23"H
Weight: 102 lbs

3YR



Center Cover
Included



4F10-GLS
16" x 32" Tempered
Glass Surround for
36" x 54" Fire Table

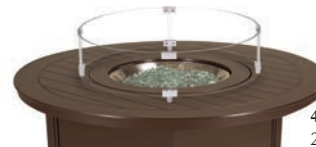


3F70
54" Rd. MGP Top
Fire Table
54"Wx54"Dx23"H
Weight: 100 lbs

3YR



Center Cover
Included



4F00-GLS
25" Round Tempered
Glass Surround for
42" & 54" Fire Tables

AVAILABLE LIFT KITS



2F60
Dining Height Lift Kit for
3F10, 3F40, 3F70, CF40 & CF30
27.25"Wx27.25"Dx5"H
Combined Height: 28"
Weight: 5 lbs



2F50
Balcony Height Lift Kit for
3F10, 3F40, 3F70, CF40 & CF30
27.25"Wx27.25"Dx13"H
Combined Height: 36"
Weight: 7 lbs



2F00
Bar Height Lift Kit for
3F10, 3F40, 3F70, CF40 & CF30
27.25"Wx27.25"Dx17"H
Combined Height: 40"
Weight: 8.5 lbs



6F40
48" x 84" Rect. MGP
Top Fire Table
47.5"Wx85.25"Dx23"H
Weight: 172 lbs

3YR



Center Cover
Included



6F20-GLS
16" x 44" Rect.
Tempered Glass
Surround for 48" x 84"
Fire Tables

AVAILABLE LIFT KITS



6F60
Dining Height Lift Kit
for 6F40
48"Wx27.25"Dx5"H
Combined Height: 28"
Weight: 6 lbs

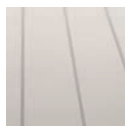


6F50
Balcony Height Lift Kit
for 6F40
48"Wx27.25"Dx13"H
Combined Height: 36"
Weight: 7.5 lbs



6F00
Bar Height Lift Kit for
6F40
48"Wx27.25"Dx17"H
Combined Height: 40"
Weight: 9 lbs

STANDARD MARINE GRADE POLYMER SLAT TOP OPTIONS



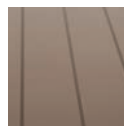
P5S Snow



PYS Warm Grey



P6S Desert



P4S Beachwood



P1S Kona



PFS Storm



P3S Classic
Graphite



P7S Black

ACCENT MARINE GRADE POLYMER SLAT TOP OPTIONS



Items notated with Color
Symbol are available with
Accent MGP Top options.



PCS Cranberry



PHS Hunter



PQS Aqua



PNS Navy

FIRE TABLE SELECTION

RUSTIC POLYMER TOP FIRE TABLES & ACCESSORIES

Rustic Polymer colors available only on top surface of Fire Tables (sides will be same color as powdercoat frame except White frames will have Snow MGP side panels).
Electronic Ignition, 55,000 BTU (3F10 rectangle), 60,000 BTU (Round), 100,500 BTU (6F40 Rectangle), Propane or Natural Gas, includes Clear Crystal Fire Gems.



3F40
42" Rd. Rustic
Polymer Top Fire Table
42"Wx42"Dx23"H
Weight: 97 lbs

3YR



Center Cover
Included



4F00-GLS
25" Round Tempered
Glass Surround for 42"
& 54" Fire Tables



3F10
36" x 54" Rect. Rustic
Polymer Top Fire Table
36"Wx54"Dx23"H
Weight: 105 lbs

3YR



Center Cover
Included



4F10-GLS
16" x 32" Tempered
Glass Surround
for 36" x 54" Fire Table

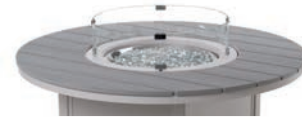


3F70
54" Rd. Rustic Polymer
Top Fire Table
54"Wx54"Dx23"H
Weight: 123 lbs

3YR



Center Cover
Included



4F00-GLS 25" Round
Tempered Glass Sur-
round for 42" & 54"
Fire Tables

AVAILABLE LIFT KITS



2F60
Dining Height Lift Kit for
3F10, 3F40, 3F70, CF40 & CF30
27.25"Wx27.25"Dx5"H
Combined Height: 28"
Weight: 5 lbs



2F50
Balcony Height Lift Kit for
3F10, 3F40, 3F70, CF40 & CF30
27.25"Wx27.25"Dx13"H
Combined Height: 36"
Weight: 7 lbs



2F00
Bar Height Lift Kit for
3F10, 3F40, 3F70, CF40 & CF30
27.25"Wx27.25"Dx17"H
Combined Height: 40"
Weight: 8.5 lbs



6F40
48" x 84" Rect. Rustic
Polymer Top Fire Table
47.5"Wx85.25"Dx23.25"H
Weight: 186 lbs

3YR



Center Cover
Included



6F20-GLS
16" x 44" Rect.
Tempered Glass
Surround for 48" x 84"
Fire Tables

AVAILABLE LIFT KITS



6F60
Dining Height Lift Kit
for 6F40
48"Wx27.25"Dx5"H
Combined Height: 28"
Weight: 6 lbs



6F50
Balcony Height Lift Kit
for 6F40
48"Wx27.25"Dx13"H
Combined Height: 36"
Weight: 7.5 lbs



6F00
Bar Height Lift Kit for
6F40
48"Wx27.25"Dx17"H
Combined Height: 40"
Weight: 9 lbs

RUSTIC POLYMER TOP OPTIONS



Items notated with Rustic
Symbol are available with
Rustic Polymer Top options.



RG0 Cape Grey



RX0 Boardwalk



RU0 Chestnut



RT0 Teak



RL0 Laguna

NEW
2024

FIRE TABLE SELECTION

ORIGINS TOP FIRE TABLE & ACCESSORIES

MGP sides will be same color as powdercoat frame except White frames will have Snow MGP side panels. Electronic Ignition, 55,000 BTU (rectangle), 60,000 BTU (Round), Propane or Natural Gas, includes Clear Crystal Fire Gems.

NEW
2024



CF40
36" x 54" Rect. Origins
Top Fire Table
36"Wx54"Dx23"H
Weight: 134 lbs
Center Cover Included

3YR

EASY ACCESS DRAWER DESIGN

NEW FOR 2024





4F10-GLS
16" x 32" Tempered Glass
Surround for 36" x 54" Fire Table

NEW
2024



CF30
54" Rd. Origins Top Fire Table
54"Wx54"Dx23"H
Weight: 148 lbs
Center Cover Included

3YR



4F00-GLS
25" Round Tempered Glass
Surround for 42" & 54" Fire
Tables

AVAILABLE LIFT KITS



2F60
Dining Height Lift Kit for
3F10, 3F40, 3F70, CF40 & CF30
27.25"Wx27.25"Dx5"H
Combined Height: 28"
Weight: 5 lbs



2F50
Balcony Height Lift Kit for
3F10, 3F40, 3F70, CF40 & CF30
27.25"Wx27.25"Dx13"H
Combined Height: 36"
Weight: 7 lbs

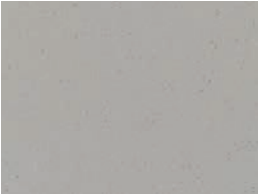


2F00
Bar Height Lift Kit for
3F10, 3F40, 3F70, CF40 & CF30
27.25"Wx27.25"Dx17"H
Combined Height: 40"
Weight: 8.5 lbs

ORIGINS FIRE TABLE TOP OPTIONS



A33 Nordic



A31 New Concrete



A32 Palermo

Trash/Towel Receptacle

Marine Grade Polymer (MGP)/ Powdercoated Aluminum Frame • Stainless Steel Hardware



Accent MGP colors available only on the two horizontal surfaces of the Trash/Towel Receptacle (sides will be same color as powdercoat frame except Textured White frames will have Snow MGP side panels). Rustic Polymer colors not available on Trash/Towel Receptacle.



TRASH ONLY
TOWELS ONLY
RECYCLE ONLY

30 Gallon Plastic Bin and set of 3 adhesive placards included.



3T00
Trash/Towel Receptacle
27.5"Wx20.5"Dx40"H
Item Weight: 64 lbs

5YR



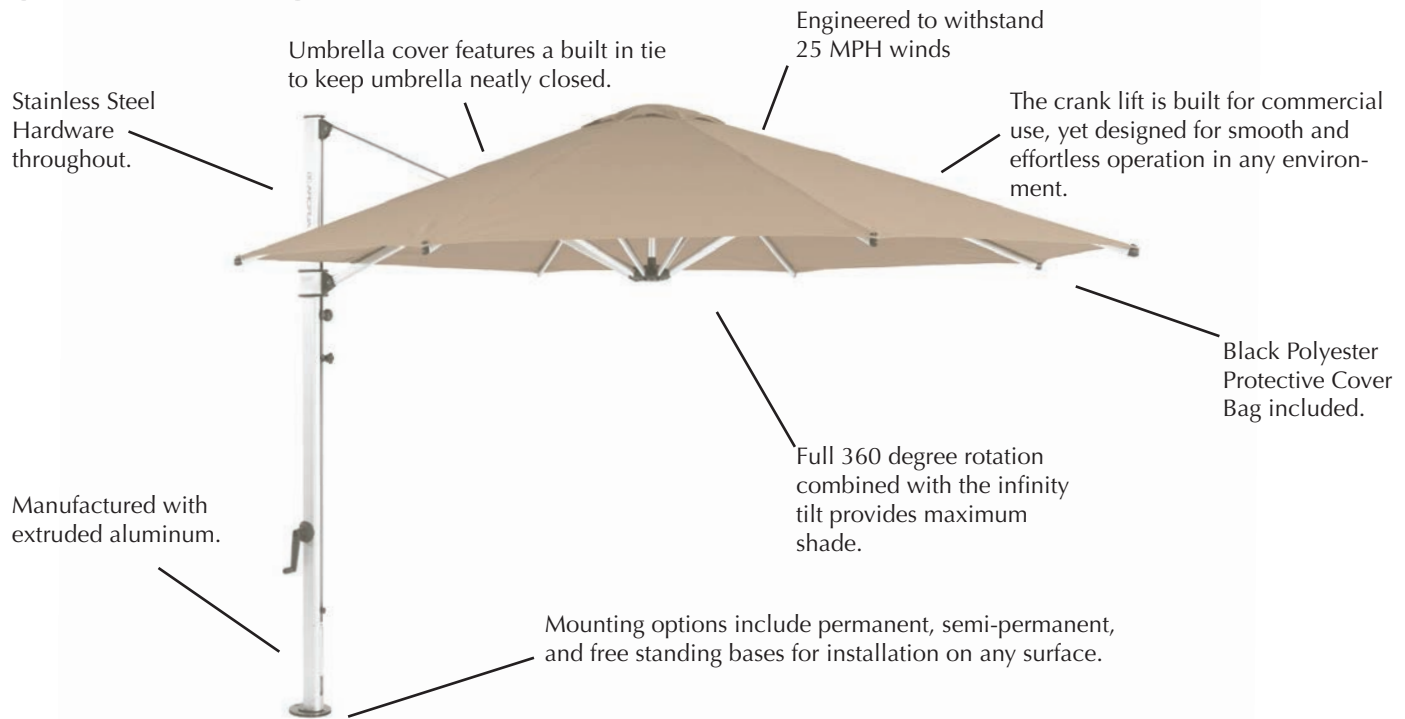
5YR = 5 Year Contract Warranty

3YR = 3 Year Contract Warranty

FEATURES & BENEFITS UMBRELLAS

UMBRELLAS ON PP. 48-49

CANTILEVER UMBRELLA



CANTILEVER FRAME COLOR



Matte Silver

CANTILEVER COVER FABRIC OPTIONS

(Cantilever Umbrella only available in the fabrics shown below.)



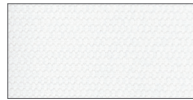
13F Navy
Grade: B
Coordinating Cushion
Fabric: 13A Navy



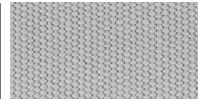
66F Capri
Grade: B
Coordinating Cushion
Fabric: 66A Azure



17F Linen
Grade: B
Coordinating Cushion
Fabric: 17A Champagne



6F White
Grade: B
Coordinating Cushion
Fabric: 6A White

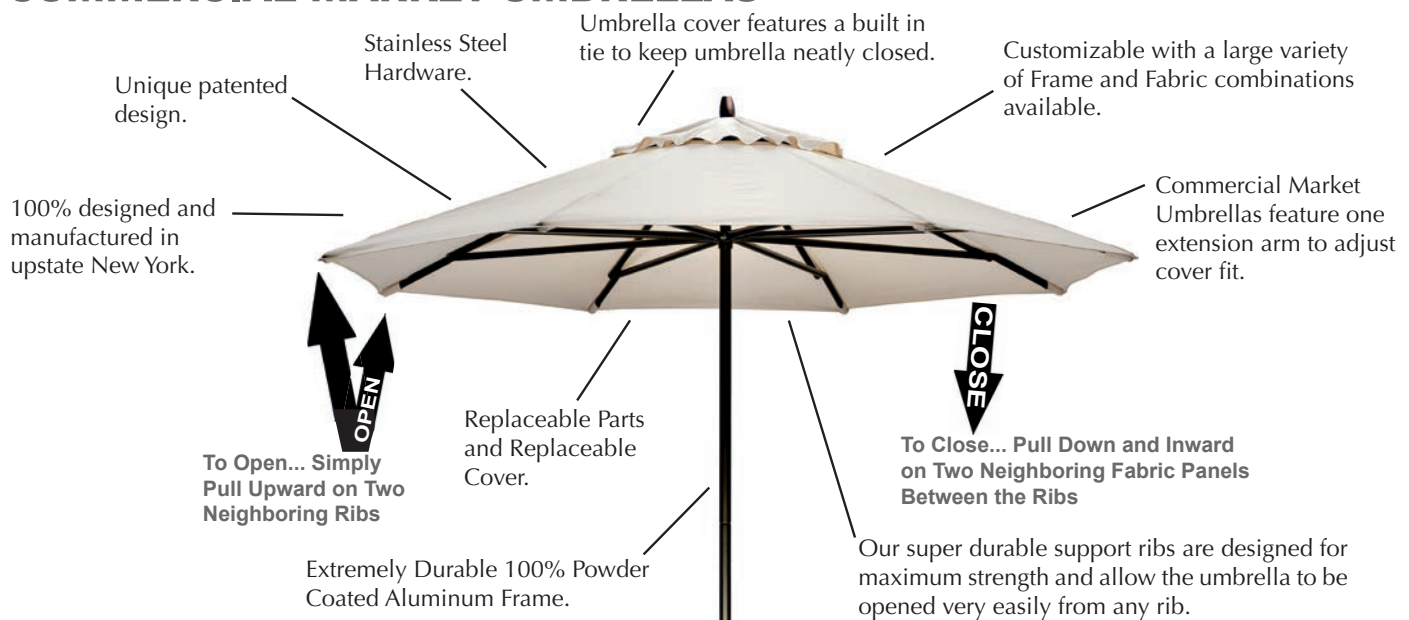


99F Cadet Gray
Grade: B



5F Black
Grade: B
Coordinating Cushion
Fabric: 5A Black

COMMERCIAL MARKET UMBRELLAS



Simple yet effective, our unique and patented (US 8,230,869 / 8,302,616) mechanisms allow you to raise and lower your umbrella by simply pulling on the ribs or pushing on the fabric. This design is especially helpful with the use of larger dining tables where access to the umbrella crank is limited. It also adds to the durability and aesthetics of the umbrella.

Cantilever Umbrella

Aluminum Frame • Stainless Steel Hardware • Fabrics limited to six acrylic fabrics shown on opposite page



CAUM
11' Cantilever Umbrella
Weight: 95 lbs

3YR



CAMP
Deck Mounting Plate



CABA
33" x 34" Square Galvanized Steel Base w/
Wheels
Weight: 94 lbs (before pavers installed)

3YR

***NOTE: (12) 16"x16" x 2" Pavers re-
quired, not included. Base holds 3 pavers
or 105lbs minimum per quadrant)**



CAGM
In-Ground Mount

***Must be installed by
Professional installer**

5YR = 5 Year Contract Warranty

3YR = 3 Year Contract Warranty

Commercial Market Umbrella Collection

Aluminum Frame • Patented Mechanism • Available in Sunbrella® Stock Book Program



670 7 1/2' Commercial Market Umbrella
Item Weight: 13 lbs

3YR



600 9' Commercial Market Umbrella
Item Weight: 14 lbs

3YR

COMMERCIAL MARKET UMBRELLA TEXTURED POWDERCOAT FRAME COLOR OPTIONS



Umbrella Base Selection (For Commercial Market Umbrellas Only)



3YR

#12 24" Square Steel Market Base
Item Weight: 55 lbs.
24" square, 5/16" thick
Overall Height: 10.5"

#W White #T Graphite
#6 Snow #D Desert
#8 Black #F Storm
#Y Warm Grey #J Beachwood
#K Kona

Free-standing and under table use



1YR

#38 21" Round Weighted Base w/ Wheels
Item Weight: 80 lbs.
21" Diameter
Overall Height: 14.5"

#W White (coordinates with White, Snow & Warm Grey)
#8 Black
#T Graphite (coordinates with Storm and Graphite)
#Z Bronze (coordinates with Kona, Beachwood & Desert).

Free-Standing & under table use (excluding tables using 2280 Legs)



1YR

#13 16" Weighted Base w/ Handle
Item Weight: 45 lbs.
16" Diameter
Overall Height: 6"

#W White (coordinates with White, Snow & Warm Grey)
#8 Black
#0TT Graphite (coordinates with Storm and Graphite)
#Z Bronze (coordinates with Kona, Beachwood & Desert).

Under table use only



1YR

#37 24" Round Weighted Base w/ Wheels
Item Weight: 120 lbs.
24" Diameter
Overall Height: 20.25"

#W White (coordinates with White, Snow & Warm Grey)
#8 Black
#T Graphite (coordinates with Storm and Graphite)
#Z Bronze (coordinates with Kona, Beachwood & Desert).

Free-Standing use only

Furniture Accessories



PCMS
23.5" x 75" Universal Chaise Pad



HDPL
10.5" x 23" Attachable Pillow

Our HDPL can be used as a head pillow on our chaises and chairs, it also functions as a lumbar pillow. The elastic strap makes sure the pillow stays in place.



LPLW
12" x 24" Lumbar Pillow



HPLW
17" Throw Pillow



TPLW
20" Throw Pillow



1ABP
21" x 6" Bolster Pillow



ADA0-PLG
Tall legs plugs to raise overall table height for ADA-compliance on select Tables. See table pages. (Set of 4)



For extra windy locations we offer a 10 lb Weighted Add-On Bar for Sling and Strap Collections.

5YR



SPRDBR3
Spreader Bar Tool for replacing slings



ANC0
Bench Anchor Kit (Set of 4)

Table Selection

OBSCURE ACRYLIC ACCESSORY TABLES



3YR

200ACR...17" Sq.
End Table
Overall Height: 18"



VALUE HAMMERED MARINE GRADE POLYMER TOP TABLES

Dining, Balcony & Bar Heights. All dining, balcony and bar tables feature umbrella holes. Heights listed below represent the overall height. Mix and match table top and leg color combinations. See available MGP colors on opposite page.



Top Only **NEW!**
• H980... 30" Rd. Table Top Only

3YR

Legs Only
• 2W20LEG... Dining Height Legs only, 28.5"H
• 3W20LEG... Balcony Height Legs only, 36.5"H
• 4W20LEG... Bar Height Legs only, 40.5"H



Top Only **NEW!**
• H980... 30" Rd. Table Top Only

3YR

Pedestal Base Only
• 2X20BAS... Dining Height Base only, 28.5"H
• 3X20BAS... Balcony Height Base only, 36.5"H
• 4X20BAS... Bar Height Base only, 40.5"H



Top Only **NEW!**
• H980... 30" Rd. Table Top Only

3YR

80lb Weighted Pedestal Base Only
• 2P20BAS... Dining Height Base only, 28.5"H
• 3P20BAS... Balcony Height Base only, 36.5"H
• 4P20BAS... Bar Height Base only, 40.5"H



Top Only **NEW!**
• H910... 36" Sq. Table Top Only

3YR

Legs Only
• 2W50LEG... Dining Height Legs only, 28.5"H
• 3W50LEG... Balcony Height Legs only, 36.5"H
• 4W50LEG... Bar Height Legs only, 40.5"H



Top Only **NEW!**
• H910... 36" Sq. Table Top Only

3YR

Pedestal Base Only
• 2X20BAS... Dining Height Base only, 28.5"H
• 3X20BAS... Balcony Height Base only, 36.5"H
• 4X20BAS... Bar Height Base only, 40.5"H



Top Only **NEW!**
• H910... 36" Sq. Table Top Only

3YR

80lb Weighted Pedestal Base Only
• 2P20BAS... Dining Height Base only, 28.5"H
• 3P20BAS... Balcony Height Base only, 36.5"H
• 4P20BAS... Bar Height Base only, 40.5"H



Top Only **NEW!**
• H940... 42" Rd. Table Top Only

3YR

Legs Only
• 2W50LEG... Dining Height Legs only, 28.5"H
• 3W50LEG... Balcony Height Legs only, 36.5"H
• 4W50LEG... Bar Height Legs only, 40.5"H



Top Only **NEW!**
• H940... 42" Rd. Table Top Only

3YR

Pedestal Base Only
• 2X20BAS... Dining Height Base only, 28.5"H
• 3X20BAS... Balcony Height Base only, 36.5"H
• 4X20BAS... Bar Height Base only, 40.5"H



Top Only **NEW!**
• H940... 42" Rd. Table Top Only

3YR

80lb Weighted Pedestal Base Only
• 2P20BAS... Dining Height Base only, 28.5"H
• 3P20BAS... Balcony Height Base only, 36.5"H
• 4P20BAS... Bar Height Base only, 40.5"H



Dining Table **NEW!**
• 49B0... 48" Rd. Dining Height Table

3YR



Top Only **NEW!**
• H990... 48" Rd. Table Top Only

3YR

Pedestal Base Only
• 2X20BAS... Dining Height Base only, 28.5"H
• 3X20BAS... Balcony Height Base only, 36.5"H
• 4X20BAS... Bar Height Base only, 40.5"H



Top Only **NEW!**
• H990... 48" Rd. Table Top Only

3YR

120lb Weighted Pedestal Base Only
• 2P50BAS... Dining Height Base only, 29"H
• 3P50BAS... Balcony Height Base only, 37"H
• 4P50BAS... Bar Height Base only, 41"H



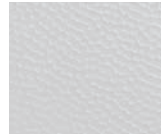
Dining Table

• H9D0... 42" x 84" Oval Dining Height Table

NEW!

3YR

HAMMERED MARINE GRADE POLYMER TOP OPTIONS



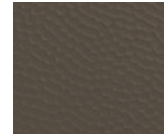
P5M Snow



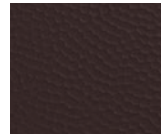
PYM Warm Grey



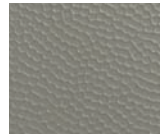
P6M Desert



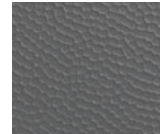
P4M Beachwood



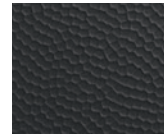
P1M Kona



PFM Storm



P3M Classic Graphite



P7M Black



MARINE GRADE POLYMER TOP TABLES - SLAT

Accessory, Coffee, Dining, Balcony & Bar Heights. All coffee, dining, balcony and bar tables feature umbrella holes unless otherwise noted. End tables have no holes. Heights listed below represent the overall height. Mix and match table top and leg color combinations. Accent MGP colors available on items marked below. See available colors on p. 54. MGP Top Fire Tables shown on p. 43.



3YR

200...17" Square End Table
Overall Height: 18"
(Smooth top only)



3YR

6M90...17.5" Square Side Table
Overall Height: 24.25"
(Smooth top only)



3YR

5100...18" Square End Table
Overall Height: 19.5"
(Smooth top only)



3YR

18N0...18" Round End Table
Overall Height: 18.5"
(Smooth top only)



3YR

5210...10"x27" Rect. Chaise Table
Overall Height: 19.5"



3YR

5140...21" Round End Table
Overall Height: 19.5"



3YR

5180...21" Round High End Table
Overall Height: 29"



3YR

5000...21" Square End Table
Overall Height: 19.5"



3YR

5W80...23" Round End Table
Overall Height: 19.75"
(Smooth top only)



3YR

NL80...23" Round End Table
Overall Height: 19.5"
(smooth top only)



3YR

50F0... 28.5"x28.5" Square Attachable Accessory Table, no hole (Compatible with Leeward & Larssen Cushion Sectionals)
Overall Height: 14"



3YR

50N0... 28.5"x28.5" Square Attachable Corner Table, no hole (Compatible with Leeward & Larssen Cushion Sectionals)
Overall Height: 21.5"



3YR

50W0...21" x 42" Rect. Coffee Table, no hole
Overall Height: 18"



3YR

5W90...24" x 42" Oval Coffee Table, no hole
Overall Height: 19.75"
(Smooth top only)



3YR

NL30...24" x 42" Oval Coffee Table, no hole
Overall Height: 19.5"
(smooth top only)



3YR

50Q0...24" x 48" Rect. Coffee Table, no hole
Overall Height: 18"



TOP ONLY

• T300...18" x 54" Rect. Table Top Only, no hole

PARSONS LEGS ONLY

• 5M00LEG...Dining Height Legs only, 29"

• 6M00LEG...Balcony Height Legs only, 37"

• 7M00LEG...Bar Height Legs only, 41"

3YR

5YR = 5 Year Contract Warranty

3YR = 3 Year Contract Warranty



TOP ONLY **3YR**
 • **T110...**36" Square Table Top Only

LEGS ONLY
 • **2W50LEG...** Dining Height Legs only, 28.5"H
 • **3W50LEG...** Balcony Height Legs only, 36.5"H
 • **4W50LEG...** Bar Height Legs only, 40.5"H



TOP ONLY **3YR**
 • **T110...**36" Square Table Top Only

PEDESTAL BASE ONLY
 • **2X20BAS...** Dining Height Base only, 28.5"H
 • **3X20BAS...** Balcony Height Base only, 36.5"H
 • **4X20BAS...** Bar Height Base only, 40.5"H



TOP ONLY **3YR**
 • **T110...**36" Square Table Top Only

80LB WEIGHTED PEDESTAL BASE ONLY
 • **2P20BAS...** Dining Height Base only, 28.5"H
 • **3P20BAS...** Balcony Height Base only, 36.5"H
 • **4P20BAS...** Bar Height Base only, 40.5"H



TOP ONLY **3YR**
 • **TT10...**36" Square Table Top Only

PARSONS LEGS ONLY
 • **8M00LEG...** Coffee Height Legs only, 18"H
 • **5M00LEG...** Dining Height Legs only, 29"H
 • **6M00LEG...** Balcony Height Legs only, 37"H
 • **7M00LEG...** Bar Height Legs only, 41"H



TOP ONLY **3YR**
 • **T120...**42" Round Table Top Only

LEGS ONLY
 • **2W50LEG...** Dining Height Legs only, 28.5"H
 • **3W50LEG...** Balcony Height Legs only, 36.5"H
 • **4W50LEG...** Bar Height Legs only, 40.5"H



TOP ONLY **3YR**
 • **T120...**42" Round Table Top Only

PEDESTAL BASE ONLY
 • **2X20BAS...** Dining Height Base only, 28.5"H
 • **3X20BAS...** Balcony Height Base only, 36.5"H
 • **4X20BAS...** Bar Height Base only, 40.5"H



TOP ONLY **3YR**
 • **T120...**42" Round Table Top Only

80LB WEIGHTED PEDESTAL BASE ONLY
 • **2P20BAS...** Dining Height Base only, 28.5"H
 • **3P20BAS...** Balcony Height Base only, 36.5"H
 • **4P20BAS...** Bar Height Base only, 40.5"H



NEW
2024



TOP ONLY **3YR**
 • **T320...**42" Round Table Top Only

PARSONS LEGS ONLY
 • **8M00LEG...** Coffee Height Legs only, 19"H
 • **5M00LEG...** Dining Height Legs only, 30"H
 • **6M00LEG...** Balcony Height Legs only, 37.5"H
 • **7M00LEG...** Bar Height Legs only, 41"H



TOP ONLY **3YR**
 • **T090...**42" Square Table Top Only

LEGS ONLY
 • **3730LEG...** Coffee Height Legs only, 18"H
 • **3850LEG...** Dining Height Legs only, 29"H
 • **38100LG...** Balcony Height Legs only, 37"H
 • **38000LG...** Bar Height Legs only, 41"H



TOP ONLY **3YR**
 • **T090...**42" Square Table Top Only

TAPERED LEGS ONLY
 • **NL50LEG...** Dining Height Legs only, 29"H



TOP ONLY **3YR**
 • **TP90...**42" Square Table Top Only

PEDESTAL BASE ONLY
 • **2X20BAS...** Dining Height Base only, 28.5"H
 • **3X20BAS...** Balcony Height Base only, 36.5"H
 • **4X20BAS...** Bar Height Base only, 40.5"H



TOP ONLY **3YR**
 • **TP90...**42" Square Table Top Only

80LB WEIGHTED PEDESTAL BASE ONLY
 • **2P20BAS...** Dining Height Base only, 28.5"H
 • **3P20BAS...** Balcony Height Base only, 36.5"H
 • **4P20BAS...** Bar Height Base only, 40.5"H



TOP ONLY **3YR**
 • **TM80...** 48" Round Table Top Only

LEGS ONLY
 • **2280LEG...** Dining Height Legs only, 28"H



TOP ONLY **3YR**
 • **TM80...** 48" Round Table Top Only

PEDESTAL BASE ONLY
 • **2X20BAS...** Dining Height Base only, 28.5"H
 • **3X20BAS...** Balcony Height Base only, 36.5"H
 • **4X20BAS...** Bar Height Base only, 40.5"H



TOP ONLY **3YR**
 • **TM80...** 48" Round Table Top Only

120LB WEIGHTED PEDESTAL BASE ONLY
 • **2P50BAS...** Dining Height Base only, 28.5"H
 • **3P50BAS...** Balcony Height Base only, 36.5"H
 • **4P50BAS...** Bar Height Base only, 40.5"H



TOP ONLY **3YR**
 • **T020...** 54" Round Table Top Only

LEGS ONLY
 • **3730LEG...** Coffee Height Legs only, 18"H
 • **3850LEG...** Dining Height Legs only, 29"H
 • **38100LG...** Balcony Height Legs only, 37"H
 • **38000LG...** Bar Height Legs only, 41"H



TOP ONLY **3YR**
 • **T020...** 54" Round Table Top Only

TAPERED LEGS ONLY
 • **NL50LEG...** Dining Height Legs only, 29"H



TOP ONLY **3YR**
 • **TP20...** 54" Round Table Top Only

120LB WEIGHTED PEDESTAL BASE ONLY
 • **2P50BAS...** Dining Height Base only, 29"H
 • **3P50BAS...** Balcony Height Base only, 37"H
 • **4P50BAS...** Bar Height Base only, 41"H



- **1P80**...32" x 64" Rect. Top Picnic Table

Overall Height: 29"

Overall Footprint: 64" x 66"

5YR



TOP ONLY

- **TM30**... 36" x 64" Rect. Top Table

PARSONS LEGS ONLY

- **8M00LEG**... Coffee Height Legs only, 18"H
- **5M00LEG**... Dining Height Legs only, 29"H
- **6M00LEG**... Balcony Height Legs only, 37"H
- **7M00LEG**... Bar Height Legs only, 41"H

3YR



TOP ONLY

- **TM00**... 62" Hexagonal Table Top Only

LEGS ONLY

- **2M00LEG**... Dining Height Legs only, 28"H
- **3M00LEG**... Balcony Height Legs only, 36"H
- **4M00LEG**... Bar Height Legs only, 40"H

3YR



TOP ONLY

- **TP00**... 62" Hexagonal Table Top Only

120LB WEIGHTED PEDESTAL BASE ONLY

- **2P50BAS**... Dining Height Base only, 29"H
- **3P50BAS**... Balcony Height Base only, 37"H
- **4P50BAS**... Bar Height Base only, 41"H

3YR



TOP ONLY

- **TM40**... 64" Round Table Top Only

LEGS ONLY

- **2M00LEG**... Dining Height Legs only, 28.5"H
- **3M00LEG**... Balcony Height Legs only, 36.5"H
- **4M00LEG**... Bar Height Legs only, 40.5"H

3YR



TOP ONLY

- **T160**... 64" Square Table Top Only

LEGS ONLY

- **3850LEG**... Dining Height Legs only, 29"H
- **38100LG**... Balcony Height Legs only, 37"H
- **38000LG**... Bar Height Legs only, 41"H

3YR



TOP ONLY

- **T160**... 64" Square Table Top Only

TAPERED LEGS ONLY

- **NL50LEG**... Dining Height Legs only, 29"H

3YR



TOP ONLY

- **TM60**... 42"x84" Rect. Table Top Only

LEGS ONLY

- **3850LEG**... Dining Height Legs only, 29"H
- **38100LG**... Balcony Height Legs only, 37"H
- **38000LG**... Bar Height Legs only, 41"H

3YR



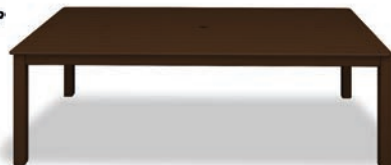
TOP ONLY

- **TM60**... 42"x84" Rect. Table Top Only

TAPERED LEGS ONLY

- **NL50LEG**... Dining Height Legs only, 29"H

3YR



TOP ONLY

- **TMK0**...48" x 96" Rect. Table Top Only

PARSONS LEGS ONLY

- **5ML0LEG**... Dining Height Legs only, 28.5"H
- **6ML0LEG**... Balcony Height Legs only, 36.5"H
- **7ML0LEG**... Bar Height Legs only, 40.5"H

3YR



- **5290** 42"x120" Extension Table (Slat top only)

Overall Height: 29.25"

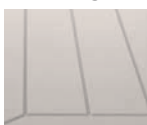
3YR



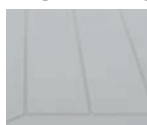
42"x88" overall when not extended

Two drop-in leaves included | Leaves store under each end

STANDARD MARINE GRADE POLYMER SLAT TOP OPTIONS



P5S Snow



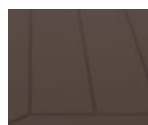
PYS Warm Grey



P6S Desert



P4S Beachwood



P1S Kona



PFS Storm



P3S Classic Graphite



P7S Black

ACCENT MARINE GRADE POLYMER SLAT TOP OPTIONS



Items notated with Color Symbol are available with Accent MGP Top options.



PCS Cranberry



PHS Hunter



PQS Aqua



PNS Navy



Symbol notates Dining table can be made ADA-Compliant using ADA0-PLG plugs shown on p. 50

5YR = 5 Year Contract Warranty

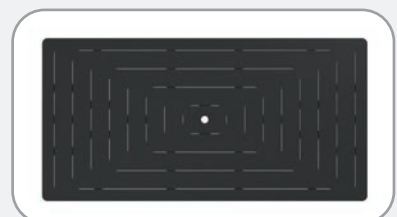
3YR = 3 Year Contract Warranty



Square Top Dash Pattern



Round Top Dash Pattern



Rectangular Top Dash Pattern

MARINE GRADE POLYMER TOP TABLES - DASH

Accessory, Coffee, Dining, Balcony & Bar Heights. All coffee, dining, balcony and bar tables feature umbrella holes unless otherwise noted. End tables have no holes. Heights listed below represent the overall height. Mix and match table top and leg color combinations. Accent MGP colors available on items marked below. See available colors on p. 56.



5000...21" Square End Table
Overall Height: 19.5"

3YR



50W0...21" x 42" Rect. Coffee Table, no hole
Overall Height: 18"

3YR



50Q0...24" x 48" Rect. Coffee Table, no hole
Overall Height: 18"

3YR



Top Only **NEW!**
• T110...36" Square Table Top Only

Legs Only

- 2W50LEG... Dining Height Legs only, 28.5"H
- 3W50LEG... Balcony Height Legs only, 36.5"H
- 4W50LEG... Bar Height Legs only, 40.5"H

3YR



Top Only **NEW!**
• T110...36" Square Table Top Only

80lb Weighted Pedestal Base Only

- 2P20BAS... Dining Height Base only, 28.5"H
- 3P20BAS... Balcony Height Base only, 36.5"H
- 4P20BAS... Bar Height Base only, 40.5"H

3YR



Top Only **NEW!**
• T110...36" Square Table Top Only

Pedestal Base Only

- 2X20BAS... Dining Height Base only, 28.5"H
- 3X20BAS... Balcony Height Base only, 36.5"H
- 4X20BAS... Bar Height Base only, 40.5"H

3YR



Top Only **NEW!**
• TT10...36" Square Table Top Only

Parsons Legs Only

- 8M00LEG... Coffee Height Legs only, 18"H
- 5M00LEG... Dining Height Legs only, 29"H
- 6M00LEG... Balcony Height Legs only, 37"H
- 7M00LEG... Bar Height Legs only, 41"H

3YR



Top Only **NEW!**
• T120...42" Round Table Top Only

Legs Only

- 2W50LEG... Dining Height Legs only, 28.5"H
- 3W50LEG... Balcony Height Legs only, 36.5"H
- 4W50LEG... Bar Height Legs only, 40.5"H

3YR



Top Only **NEW!**
• T120...42" Round Table Top Only

80lb Weighted Pedestal Base Only

- 2P20BAS... Dining Height Base only, 28.5"H
- 3P20BAS... Balcony Height Base only, 36.5"H
- 4P20BAS... Bar Height Base only, 40.5"H

3YR



Top Only **NEW!**
• T120...42" Round Table Top Only

Pedestal Base Only

- 2X20BAS... Dining Height Base only, 28.5"H
- 3X20BAS... Balcony Height Base only, 36.5"H
- 4X20BAS... Bar Height Base only, 40.5"H

3YR



Top Only **NEW!**
• T320...42" Round Table Top Only

Parsons Legs Only

- 8M00LEG... Coffee Height Legs only, 19"H
- 5M00LEG... Dining Height Legs only, 30"H
- 6M00LEG... Balcony Height Legs only, 37.5"H
- 7M00LEG... Bar Height Legs only, 41"H

3YR



Top Only **NEW!** 3YR
 • **T090**...42" Square Table Top Only

Legs Only
 • **3730LEG**... Coffee Height Legs only, 18"H
 • **3850LEG**... Dining Height Legs only, 29"H
 • **38100LG**... Balcony Height Legs only, 37"H
 • **38000LG**... Bar Height Legs only, 41"H



Top Only **NEW!** 3YR
 • **T090**...42" Square Table Top Only

Tapered Legs Only
 • **NL50LEG**... Dining Height Legs only, 29"H



Top Only **NEW!** 3YR
 • **TP90**...42" Square Table Top Only

Pedestal Base Only
 • **2X20BAS**... Dining Height Base only, 28.5"H
 • **3X20BAS**... Balcony Height Base only, 36.5"H
 • **4X20BAS**... Bar Height Base only, 40.5"H



Top Only **NEW!** 3YR
 • **TP90**...42" Square Table Top Only

80lb Weighted Pedestal Base Only
 • **2P20BAS**... Dining Height Base only, 28.5"H
 • **3P20BAS**... Balcony Height Base only, 36.5"H
 • **4P20BAS**... Bar Height Base only, 40.5"H



Top Only **NEW!** 3YR
 • **TM80**... 48" Round Table Top Only

Legs Only
 • **2280LEG**... Dining Height Legs only, 28"H



Top Only **NEW!** 3YR
 • **TM80**... 48" Round Table Top Only

Pedestal Base Only
 • **2X20BAS**... Dining Height Base only, 28.5"H
 • **3X20BAS**... Balcony Height Base only, 36.5"H
 • **4X20BAS**... Bar Height Base only, 40.5"H



Top Only **NEW!** 3YR
 • **TM80**... 48" Round Table Top Only

120lb Weighted Pedestal Base Only
 • **2P50BAS**... Dining Height Base only, 29"H
 • **3P50BAS**... Balcony Height Base only, 37"H
 • **4P50BAS**... Bar Height Base only, 41"H



Top Only **NEW!** 3YR
 • **T020**... 54" Round Table Top Only

Legs Only
 • **3730LEG**... Coffee Height Legs only, 18"H
 • **3850LEG**... Dining Height Legs only, 29"H
 • **38100LG**... Balcony Height Legs only, 37"H
 • **38000LG**... Bar Height Legs only, 41"H



Top Only **NEW!** 3YR
 • **T020**... 54" Round Table Top Only

Tapered Legs Only
 • **NL50LEG**... Dining Height Legs only, 29"H



Top Only **NEW!** 3YR
 • **TP20**... 54" Round Table Top Only

120lb Weighted Pedestal Base Only
 • **2P50BAS**... Dining Height Base only, 29"H
 • **3P50BAS**... Balcony Height Base only, 37"H
 • **4P50BAS**... Bar Height Base only, 41"H



Top Only **NEW!** 3YR
 • **TM30**... 36" x 64" Rect. Top Table

Parsons Legs Only
 • **8M00LEG**... Coffee Height Legs only, 18"H
 • **5M00LEG**... Dining Height Legs only, 29"H
 • **6M00LEG**... Balcony Height Legs only, 37"H
 • **7M00LEG**... Bar Height Legs only, 41"H



Top Only **NEW!** 3YR
 • **TM40**... 64" Round Table Top Only

Legs Only
 • **2M00LEG**... Dining Height Legs only, 28.5"H
 • **3M00LEG**... Balcony Height Legs only, 36.5"H
 • **4M00LEG**... Bar Height Legs only, 40.5"H



Top Only **NEW!** 3YR
 • **TM60**... 42"x84" Rect. Table Top Only

Legs Only
 • **3850LEG**... Dining Height Legs only, 29"H
 • **38100LG**... Balcony Height Legs only, 37"H
 • **38000LG**... Bar Height Legs only, 41"H



Top Only **NEW!** 3YR
 • **TM60**... 42"x84" Rect. Table Top Only

Tapered Legs Only
 • **NL50LEG**... Dining Height Legs only, 29"H



Top Only **NEW!** 3YR
 • **TMK0**...48" x 96" Rect. Table Top Only

Parsons Legs Only
 • **5ML0LEG**... Dining Height Legs only, 28.5"H
 • **6ML0LEG**... Balcony Height Legs only, 36.5"H
 • **7ML0LEG**... Bar Height Legs only, 40.5"H

ACCENT MGP DASH TOP OPTIONS



Items notated with Color Symbol are available with Accent MGP Top options.



PCD Cranberry



PHD Hunter



PQD Aqua



PND Navy

STANDARD MGP DASH TOP OPTIONS



P5D Snow



PYD Warm Grey



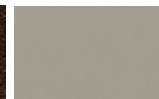
P6D Desert



P4D Beachwood



P1D Kona



PFD Storm



P3D Classic Graphite



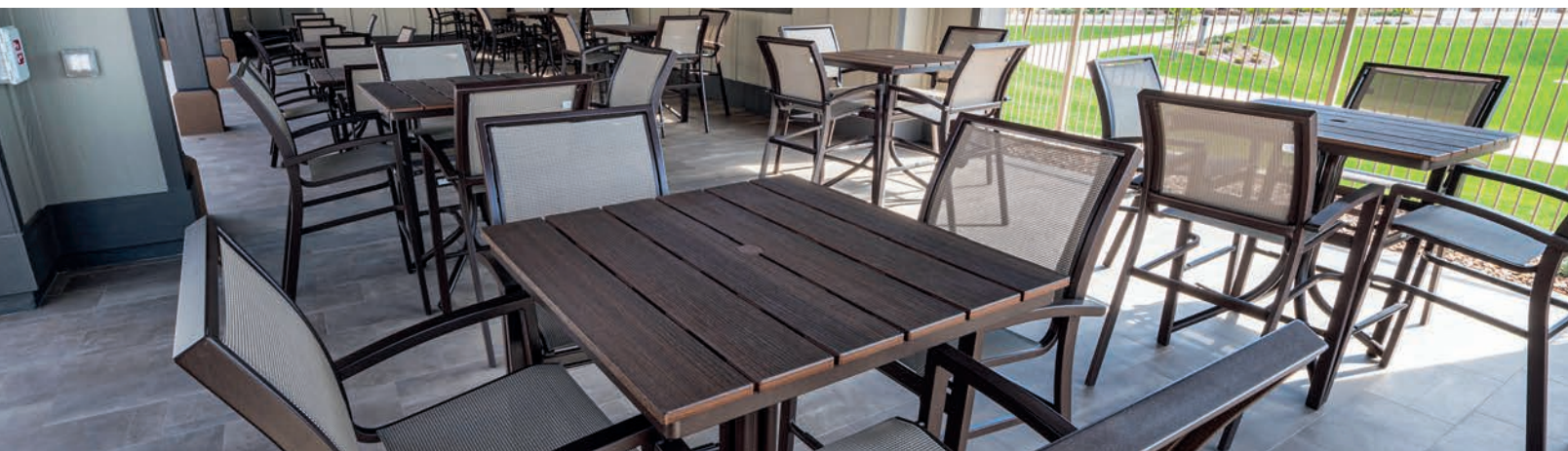
P7D Black



Symbol notates Dining table can be made ADA-Compliant using ADA0-PLG plugs shown on p. 50

5YR = 5 Year Contract Warranty

3YR = 3 Year Contract Warranty



RUSTIC POLYMER TOP TABLES

Accessory, Coffee, Dining, Balcony & Bar Heights. All coffee, dining, balcony and bar tables feature umbrella holes unless otherwise noted. End tables have no holes. Heights listed below represent the overall height. See available colors on p. 59. Rustic Polymer Top Fire Tables shown on p.44.

RUSTIC
NEW 2024

5210... 10"x27" Rect. Chaise Table
Overall Height: 19.5"
(smooth top only)

3YR

RUSTIC
NEW 2024

6M90... 17.5" Square Side Table
Overall Height: 24.25"
(smooth top only)

3YR

RUSTIC

5000... 21" Square End Table
Overall Height: 19.5"

3YR

RUSTIC

5140... 21" Round End Table
Overall Height: 19.5"

3YR

RUSTIC

5W80...23" Round End Table
Overall Height: 19.75"
(smooth top only)

3YR

RUSTIC

NL80...23" Round End Table
Overall Height: 19.75"
(smooth top only)

3YR

RUSTIC
NEW 2024

50W0... 21" x 42" Rect. Coffee Table, no hole
Overall Height: 18"

3YR

RUSTIC

5W90...24" x 42" Oval Coffee Table, no hole
Overall Height: 19.75"
(smooth top only)

3YR

RUSTIC

NL30...24" x 42" Oval Coffee Table, no hole
Overall Height: 19.75"
(smooth top only)

3YR

RUSTIC
NEW 2024

50Q0...24" x 48" Coffee Table, no hole
Overall Height: 18"

3YR

RUSTIC

51B0... 21" Round High End Table
Overall Height: 29"

3YR

RUSTIC

Top Only
• **T300...18" x 54" Rect. Table Top Only**

3YR

Parsons Legs Only
• **5M00LEG...** Dining Height Legs only, 29"H
• **6M00LEG...** Balcony Height Legs only, 37"H
• **7M00LEG...** Bar Height Legs only, 41"H

RUSTIC

TOP ONLY
• **T110...36" Square Table Top Only**

3YR

LEGS ONLY
• **2W50LEG...** Dining Height Legs only, 28.5"H
• **3W50LEG...** Balcony Height Legs only, 36.5"H
• **4W50LEG...** Bar Height Legs only, 40.5"H

RUSTIC

TOP ONLY
• **T110... 36" Square Table Top Only**

3YR

80LB WEIGHTED PEDESTAL BASE ONLY
• **2P20BAS...** Dining Height Base only, 28.5"H
• **3P20BAS...** Balcony Height Base only, 36.5"H
• **4P20BAS...** Bar Height Base only, 40.5"H

RUSTIC

TOP ONLY
• **T110... 36" Square Table Top Only**

3YR

PARSONS LEGS ONLY
• **8M00LEG...**Coffee Height Legs only, 18"H
• **5M00LEG...**Dining Height Legs only, 29"H
• **6M00LEG...**Balcony Height Legs only, 37"H
• **7M00LEG...**Bar Height Legs only, 41"H



Top Only **NEW!**
• **T120...42"** Round Table Top Only

3YR

Legs Only

- **2W50LEG...** Dining Height Legs only, 28.5"H
- **3W50LEG...** Balcony Height Legs only, 36.5"H
- **4W50LEG...** Bar Height Legs only, 40.5"H



Top Only **NEW!**
• **T120...42"** Round Table Top Only

3YR

Pedestal Base Only

- **2X20BAS...** Dining Height Base only, 28.5"H
- **3X20BAS...** Balcony Height Base only, 36.5"H
- **4X20BAS...** Bar Height Base only, 40.5"H



Top Only **NEW!**
• **T120...42"** Round Table Top Only

3YR

80lb Weighted Pedestal Base Only

- **2P20BAS...** Dining Height Base only, 28.5"H
- **3P20BAS...** Balcony Height Base only, 36.5"H
- **4P20BAS...** Bar Height Base only, 40.5"H



Top Only **NEW!**
• **T320...42"** Round Table Top Only

3YR

Parsons Legs Only

- **8M00LEG...** Coffee Height Legs only, 19"H
- **5M00LEG...** Dining Height Legs only, 30"H
- **6M00LEG...** Balcony Height Legs only, 37.5"H
- **7M00LEG...** Bar Height Legs only, 41"H



Top Only **NEW!**
• **T090...42"** Square Table Top Only

3YR

Legs Only

- **3730LEG...** Coffee Height Legs only, 18"H
- **3850LEG...** Dining Height Legs only, 29"H
- **38100LG...** Balcony Height Legs only, 37"H
- **38000LG...** Bar Height Legs only, 41"H



Top Only **NEW!**
• **T090...42"** Square Table Top Only

3YR

Tapered Legs Only

- **NL50LEG...** Dining Height Legs only, 29"H



Top Only **NEW!**
• **TP90...42"** Square Table Top Only

3YR

Pedestal Base Only

- **2X20BAS...** Dining Height Base only, 28.5"H
- **3X20BAS...** Balcony Height Base only, 36.5"H
- **4X20BAS...** Bar Height Base only, 40.5"H



Top Only **NEW!**
• **TP90...42"** Square Table Top Only

3YR

80lb Weighted Pedestal Base Only

- **2P20BAS...** Dining Height Base only, 28.5"H
- **3P20BAS...** Balcony Height Base only, 36.5"H
- **4P20BAS...** Bar Height Base only, 40.5"H



Top Only
• **TM80... 48"** Round Table Top Only

3YR

Legs Only

- **2280LEG...** Dining Height Legs only, 28"H



Top Only
• **TM80... 48"** Round Table Top Only

3YR

Pedestal Base Only

- **2X20BAS...** Dining Height Base only, 28.5"H
- **3X20BAS...** Balcony Height Base only, 36.5"H
- **4X20BAS...** Bar Height Base only, 40.5"H



Top Only
• **TM80... 48"** Round Table Top Only

3YR

120lb Weighted Pedestal Base Only

- **2P50BAS...** Dining Height Base only, 29"H
- **3P50BAS...** Balcony Height Base only, 37"H
- **4P50BAS...** Bar Height Base only, 41"H



Top Only
• **T020...54"** Round Table Top Only

3YR

Legs Only

- **3730LEG...** Coffee Height Legs only, 18"H
- **3850LEG...** Dining Height Legs only, 29"H
- **38100LG...** Balcony Height Legs only, 37"H
- **38000LG...** Bar Height Legs only, 41"H



Top Only
• **T020...54"** Round Table Top Only

3YR

Tapered Legs Only

- **NL50LEG...** Dining Height Legs only, 29"H



Top Only
• **TP20...54"** Round Table Top Only

3YR

120lb Weighted Pedestal Base Only

- **2P50BAS...** Dining Height Base only, 29"H
- **3P50BAS...** Balcony Height Base only, 37"H
- **4P50BAS...** Bar Height Base only, 41"H



Top Only
• **TM30... 36" x 64"** Rect. Top Table

3YR

Parsons Legs Only

- **8M00LEG...** Coffee Height Legs only, 19"H
- **5M00LEG...** Dining Height Legs only, 30"H
- **6M00LEG...** Balcony Height Legs only, 37.5"H
- **7M00LEG...** Bar Height Legs only, 41"H



• **1P80...32" x 64"** Rect. Top Picnic Table

5YR

Overall Height: 29"

Overall Footprint: 64" x 66"



Symbol notates Dining table can be made ADA-Compliant using ADA0-PLG plugs shown on p. 50

5YR = 5 Year Contract Warranty

3YR = 3 Year Contract Warranty



Top Only
• **TM00...** 62" Hexagonal Table Top Only

Legs Only
• **2M00LEG...** Dining Height Legs only, 28"H
• **3M00LEG...** Balcony Height Legs only, 36"H
• **4M00LEG...** Bar Height Legs only, 40"H

3YR



Top Only
• **TP00...** 62" Hexagonal Table Top Only

120lb Weighted Pedestal Base Only
• **2P50BAS...** Dining Height Base only, 29"H
• **3P50BAS...** Balcony Height Base only, 37"H
• **4P50BAS...** Bar Height Base only, 41"H

3YR



Top Only
• **TM40...** 64" Round Table Top Only

Legs Only
• **2M00LEG...** Dining Height Legs only, 28.5"H
• **3M00LEG...** Balcony Height Legs only, 36.5"H
• **4M00LEG...** Bar Height Legs only, 40.5"H

3YR



Top Only
• **T160...** 64" Square Table Top Only

Legs Only
• **3850LEG...** Dining Height Legs only, 29"H
• **38100LG...** Balcony Height Legs only, 37"H
• **38000LG...** Bar Height Legs only, 41"H

3YR



Top Only
• **T160...** 64" Square Table Top Only

Tapered Legs Only
• **NL50LEG...** Dining Height Legs only, 29"H

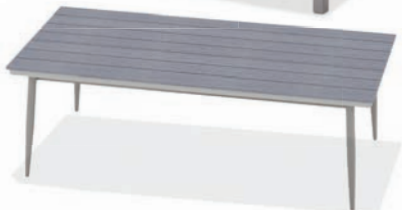
3YR



Top Only
• **TM60...** 42"x84" Rect. Table Top Only

Legs Only
• **3850LEG...** Dining Height Legs only, 29"H
• **38100LG...** Balcony Height Legs only, 37"H
• **38000LG...** Bar Height Legs only, 41"H

3YR



Top Only
• **TM60...** 42"x84" Rect. Table Top Only

Tapered Legs Only
• **NL50LEG...** Dining Height Legs only, 29"H

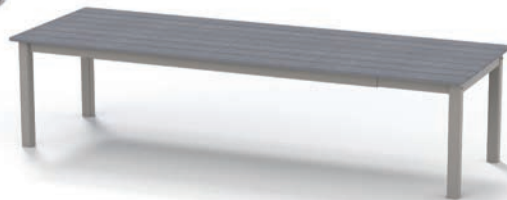
3YR



Top Only
• **TMK0...** 48" x 96" Rect. Table Top Only

Parsons Legs Only
• **5ML0LEG...** Dining Height Legs only, 28.5"H
• **6ML0LEG...** Balcony Height Legs only, 36.5"H
• **7ML0LEG...** Bar Height Legs only, 40.5"H

3YR



5290... 42"x120" Extension Table

Overall Height: 29.25"

42"x88" overall when not extended
Two drop-in leaves included
Leaves store under each end

3YR



RUSTIC POLYMER TOP OPTIONS



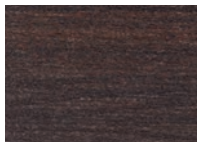
Items notated with Rustic Symbol are available with Rustic Polymer Top options.



RG0 Cape Grey



RX0 Boardwalk



RU0 Chestnut



RT0 Teak



RL0 Laguna

NEW
2024



Symbol notates Dining table can be made ADA-Compliant using ADA0-PLG plugs shown on p. 50



ORIGINS TOP TABLES

Accessory, Coffee, Dining, Balcony & Bar Heights. All coffee, dining, balcony and bar tables feature umbrella holes unless otherwise noted. End tables have no hole. Heights listed below represent the overall height. Origins Top Fire Table Shown on p. 45.

| | | |
|---|--|--|
|  <p>CT10...21" Round End Table Overall Height: 19.5"</p> | <p>NEW 2024</p>  <p>CTW0...21"x42" Rect. Coffee Table, no hole Overall Height: 18"</p> |  <p>CTH0...21" Rd. High End Table, no hole Overall Height: 29"</p> |
|  <p>Top Only • CT40...42" Square Table Top Only</p> <p>Legs Only  • 3730LEG... Coffee Height Legs only, 18"H • 3850LEG... Dining Height Legs only, 29"H • 38100LG... Balcony Height Legs only, 37"H • 38000LG... Bar Height Legs only, 41"H</p> |  <p>Top Only • CP40...42" Square Table Top Only</p> <p>Pedestal Base Only • 2X20BAS... Dining Height Base only, 28.5"H • 3X20BAS... Balcony Height Base only, 36.5"H • 4X20BAS... Bar Height Base only, 40.5"H</p> |  <p>Top Only • CP40...42" Square Table Top Only</p> <p>80lb Weighted Pedestal Base Only • 2P20BAS... Dining Height Base only, 28.5"H • 3P20BAS... Balcony Height Base only, 36.5"H • 4P20BAS... Bar Height Base only, 40.5"H</p> |
|  <p>Top Only • CT60...54" Round Table Top Only</p> <p>Tapered Legs Only • NL50LEG... Dining Height Legs only, 29"H</p> |  <p>Top Only • CT50...42"x84" Rect. Table Top Only</p> <p>Legs Only  • 3850LEG... Dining Height Legs only, 29"H • 38100LG... Balcony Height Legs only, 37"H • 38000LG... Bar Height Legs only, 41"H</p> |  <p>Top Only • CT50...42"x84" Rect. Table Top Only</p> <p>Tapered Legs Only • NL50LEG... Dining Height Legs only, 29"H</p> |
|  <p>Top Only • CT60...54" Round Table Top Only</p> <p>Tapered Legs Only • NL50LEG... Dining Height Legs only, 29"H</p> |  <p>Top Only • CP60...54" Round Table Top Only</p> <p>120lb Weighted Pedestal Base Only • 2P50BAS... Dining Height Base only, 29"H • 3P50BAS... Balcony Height Base only, 37"H • 4P50BAS... Bar Height Base only, 41"H</p> | <p>ORIGINS TABLE TOP OPTIONS</p> <div>    </div> <p>A31 New Concrete A32 Palermo A33 Nordic</p> |



Symbol notates Dining table can be made ADA-Compliant using ADA0-PLG plugs shown on p. 50

5YR = 5 Year Contract Warranty

3YR = 3 Year Contract Warranty

RECENT INSTALLATIONS



**THE RESORT AT MASSEY'S LANDING
MILLSBORO, DE**



**MAKE-A-WISH
TRUMBULL, CT**



**JENKINSON BREAKWATER BEACH PARK,
SEASIDE HEIGHTS, NJ**



LAKE GEORGE, NY



**THE TIDES AT SOUTH TEMPE
TEMPE, AZ**

RECENT INSTALLATIONS



**BAY 151 APARTMENTS
BAYONNE, NJ**



**DORSET FIELD CLUB
DORSET, VT**



**SOAKY MOUNTAIN WATERPARK
SEVIERVILLE, TN**

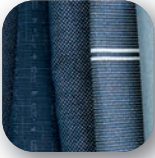


**LAKE GEORGE RV PARK,
LAKE GEORGE, NY**

PROPER CARE, CLEANING & MAINTENANCE

In order to keep your products looking great for many years to come, we recommend the below instructions for proper care, cleaning and maintenance.

SOLUTION DYED ACRYLICS (CUSHION & UMBRELLA) & MESH FABRICS (SLING)



Spot wash dirt with lukewarm water and a mild soap. Rinse thoroughly with clean water, then air-dry. To clean stubborn stains, in a ventilated area, prepare a mild solution of one cup bleach plus two caps full of a natural soap per gallon of water. Spray the entire area, and scrub vigorously if necessary. For stubborn stains use a soft bristle brush. Rinse and allow to dry. Do not use pine oil cleaners on cushion or sling fabrics. For Sunbrella fabrics, blot (don't rub) liquid spills with a clean, dry cloth. For oil-based spills, apply an absorbent such as corn starch, then remove with a straight edge. Spray on a mild cleaning solution of soap (such as Dawn or Woolite) and water. Rinse the fabric thoroughly to remove all soap residue. Air dry.

POWDERCOAT FINISH ON ALUMINUM



To keep furniture looking new, use Soft Scrub or similar non-abrasive products to remove scuff marks and scratches. Use lemon oil for protection and natural soap and water for cleaning. Powder coating is one of the most durable protective coatings available for metal surfaces, but proper care will help prolong the finish. Over time, powder coated finishes exposed to the elements may show signs of weathering such as reduced gloss and slight color loss. A consistent schedule of cleaning the surface will help remove dirt, grime and other surface buildup that may be harmful to the powder coating finish. We do not recommend using chemical cleaners such as Acetone, Mineral Spirits or Lacquer thinners. Any type of chemical that is harmful to the powder coat surface should be removed or cleaned immediately.

MARINE GRADE POLYMER (MGP) & RUSTIC POLYMER



Avoid teak oil and other products that can stain the finish. Avoid heat sources that exceed 180 degrees F. Only routine cleaning with common detergents is required. Nylon scrub pads and brushes should be used with care because excessive force can mar the finish. For resistant stains, apply bleach and allow to soak in. Use citrus cleaner, alcohol or mineral spirits to remove grease or oil stains. Automotive silicone spray products or household furniture polish can help to hide scratches in the surface.

VINYL STRAP FURNITURE



Straps can be cleaned using a soapy solution of warm water and Ivory Liquid. Hose down to rinse. **DO NOT USE PINE OIL CLEANSERS OR HARSH ABRASIVES.** Straps can be easily replaced by the consumer by heating the strap in hot water and attaching it to the frame while hot. As the straps cool down, they will shrink for a snug fit.

TABLE TOPS



For tables with a powder coat finish or a polymer surface, follow directions above. For Origins Top tables, use dish soap and water. For other tables, use standard counter top cleaners and protectors.

WINTER MAINTENANCE



Furniture that will be stored outside or in other cold areas must be drained of any water to avoid freeze/ice damage in the tubing. Freeze/ice damage is not covered under warranty.

LIMITED WARRANTY

For clarity in this Contract Catalog, we use the following terminology to indicate the contract warranty.
5yr = 5 Year Contract Warranty. **3yr** = 3 Year Contract Warranty. **1yr** = 1 Year Contract Warranty.

Limited Warranty

Frames and Powder Coat: If the powder coat aluminum frame, marine grade polymer frame, or rustic polymer frame fails structurally during normal usage within the applicable warranty period (as defined below), we will repair or replace the frame without charge, parts and labor included. (In the case of discontinued models or finishes, we will replace the item with the closest comparable current model.) If an authorized dealer is to make the repairs, a maximum labor charge must be agreed upon by the dealer before work can commence. Products covered by our frame warranty are identified in our catalog as either **15/5**, **15/3**, **15/1** or no identification at all. **15/5** indicates a frame warranty period of 15 years in residential use/5 years in contract use. **15/3** indicates a frame warranty period of 15 years in residential use/3 years in contract use. **15/1** indicates a frame warranty period of 15 years in residential use/1 year in contract use. No indication indicates a frame warranty period of 1 year in residential use and that there is no frame warranty in contract use. All warranty periods commence on the date of purchase by the contract customer. Contract use includes any business, commercial, institutional, or other non-residential use.

Marine Grade Polymer and Rustic Polymer materials used in our products are warranted against rot, cracking, splintering and decay for the length of the applicable warranty period defined above.

The powder coat finish on our powder coat aluminum frame furniture is warranted against peeling, cracking or blistering for a period of 3 years from the date of purchase. Failure of the powder coat finish due to abrasion, including abrasion caused by stacking the furniture against other furniture or scraping against other surfaces, is not covered by this warranty. Exposure to salt water or salt air may cause powder coat finishes to blister due to oxidization of the metal; such blistering and oxidization are not covered by this warranty. Fading, staining and scratching of marine grade polymer or rustic polymer surfaces is not covered by this warranty. Rusting of any steel or stainless steel components is not covered by this warranty.

The following products are not covered by our frame and powder coat warranties: table tops, umbrellas, umbrella bases, wood furniture, cushions, slings, straps, and folding aluminum furniture.

Non-Glass Table Tops: Non-glass table tops are warranted to be free from manufacturing defects for 3 years from date of purchase. Fading or staining of the table surface is not included under warranty. Tables must not be stored upside down.

Umbrellas and Umbrella Bases: Umbrella frames and umbrella bases are warranted to be free of manufacturing defects for either 1 year or 3 years from the date of purchase, as identified in our catalog and price lists by the following indicators: **3/3** indicates 3 years in residential use/3 years in contract use; **1/1** indicates 1 year in residential use/1 year in contract use. Steel bases, if not properly maintained, will rust if the finish is scratched through to the metal. Rust is not covered under warranty. Umbrella covers/fabric are warranted to be free from manufacturing defects for 1 year from the date of purchase.

Wood Furniture, Cushions, Slings, and Folding Aluminum Furniture: Wood furniture, cushions, slings, and folding aluminum furniture are warranted to be free of manufacturing defects for 1 year from the date of purchase.

Vinyl Straps: Vinyl straps are warranted against breakage and gross discoloration for a period of 3 years from the date of purchase. In the case of breakage or gross discoloration (our judgment), replacement straps will be provided but labor is not included.

Fire Table Burner Warranty: The burner and control panel are warranted by the manufacturer to be free from defects in material and workmanship for a period of one year from its date of purchase. Please refer to the full warranty in the user manual included in the burner unit packaging.

Patio Heater Warranty: The burner and controls are warranted to be free of manufacturing defects for a period of one year from date of purchase. Bending or denting the aluminum deflector is not covered under warranty. Damage caused by the heater tipping over is not covered under warranty.

Other Warranty Limitations and Exclusions: The natural weathering of wood finishes, breakage of glass, fading, staining and mildewing of fabrics, slings and strapping, the compression of cushion fillings, the stretching of slings, and the rusting of umbrella bases or pedestal bases are not covered under our warranties. Warranty is void unless routine maintenance of product is performed, such as tightening of screws and bolts, regular care and cleaning.

Furniture Covers: Furniture covers are warranted to be free of manufacturing defects for one year from date of purchase. Furniture covers not made by the manufacturer could cause damage to the surface finish of our furniture. Such damage is not covered by this warranty.

Freeze or ice damage is not covered by our warranties. Furniture stored outside or in other cold storage should be drained of any water. If allowed to freeze inside the furniture, water can damage the tubing.

These warranties do not cover the failure of furniture caused by acts of God, accident, neglect, improper shipping or handling, or by unreasonable or abusive use, and these warranties are void if our care and maintenance instructions were not properly followed. Furniture used in a contract (commercial) setting is not warranted unless it is specifically designated for contract or commercial use in our catalog.

All warranties are to the original purchaser from authorized dealers only. Warranties are not transferable. Warranties are for repair, replacement or substitution only, in our sole discretion. **Warranty service of any kind does not extend the warranty period.**

THESE WARRANTIES ARE IN LIEU OF ANY OTHER WARRANTIES, EXPRESS OR IMPLIED, INCLUDING BUT NOT LIMITED TO, THE IMPLIED WARRANTIES OF MERCHANTABILITY AND FITNESS FOR A PARTICULAR PURPOSE. IN NO EVENT WILL MERIDIAN FURNITURE COMPANY BE LIABLE FOR INCIDENTAL OR CONSEQUENTIAL DAMAGES, EVEN IF IT HAD REASON TO KNOW IN ADVANCE THAT SUCH DAMAGES WERE POSSIBLE. THESE WARRANTIES GIVE YOU SPECIFIC LEGAL RIGHTS AND YOU MAY HAVE OTHER RIGHTS THAT VARY FROM JURISDICTION TO JURISDICTION. SOME JURISDICTIONS DO NOT ALLOW THE EXCLUSION OF IMPLIED WARRANTIES OR THE LIMITATION OF DAMAGES, SO THE ABOVE EXCLUSION AND LIMITATIONS MAY NOT APPLY TO YOU. IN THE EVENT THE WARRANTY EXCLUSIONS DO NOT APPLY TO YOU, THEN, WHERE LEGALLY PERMISSIBLE, SUCH WARRANTIES ARE LIMITED IN DURATION TO THE APPLICABLE WARRANTY PERIOD AND NO WARRANTIES APPLY AFTER THAT PERIOD.

How to Obtain Warranty Service: If You are the Original Purchaser, please contact our Customer Service Department by Email: Info@MeridianFurnitureCompany.com Stating the problem & providing proof of purchase. We may request the merchandise be returned for inspection or a photograph may be submitted to show the problem or defect. A Return Merchandise Authorization Request Form will be sent to the Original Purchaser requesting details and giving instructions for returning items if necessary. If the Request is approved, the End User will receive a Return Merchandise Authorization Number. No returns will be accepted without prior written authorization from our Customer Service Department. After authorization is received the furniture must be returned to us in proper packaging, freight prepaid, with the Return Merchandise Authorization Number clearly marked on the cartons. We will cover the cost of shipping repaired or replacement items only to addresses within the contiguous 48 United States.

Shipping Policy

Warehousing Fees: Any retail or commercial order stored at the factory due to a delay caused by the customer is subject to warehousing fees at our discretion.



All Products in this catalogue sold and serviced by Meridian Furniture Company, LLC

Meridian Furniture Company

Showroom:

5252 Verona Road - Madison, WI 53711

Phone: 608-273-0772

Fax: 608-273-9961

Email:

Info@MeridianFurnitureCompany.com

Warehouse:

245 Remy Road - Belleville, WI 53508

Website:

www.MeridianFurnitureCompany.com